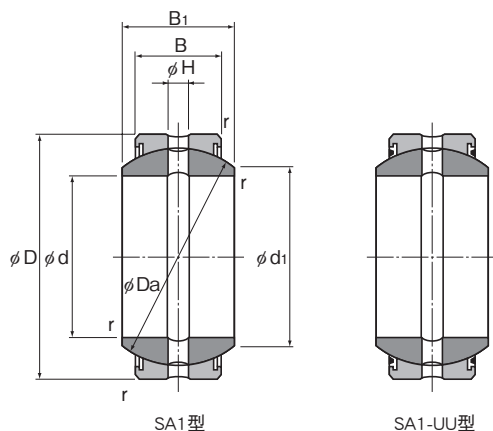
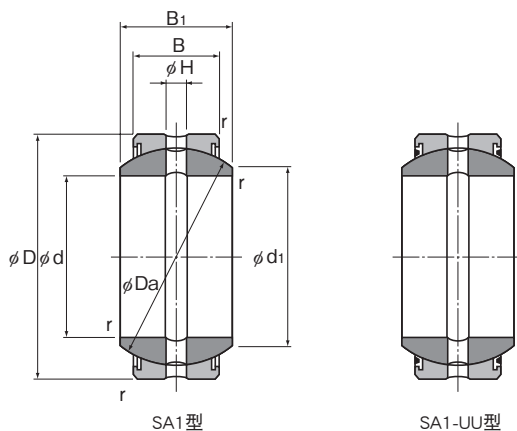


SA1型



单位：mm

| 公称型号 | | 主要尺寸 | | | | | | | | 基本额定载荷 | | 质量 |
|--------|----------|------|-----|------|----------------|----------------|------|-----|-----|--------|----------------|-------|
| 标准型 | 密封垫片型 | 内径 | 外径 | 外圈宽度 | 内环宽度 | | | | | C | C ₀ | kg |
| | | d | D | B | B ₁ | d ₁ | Da | H | r | kN | kN | |
| SA1 12 | SA1 12UU | 12 | 22 | 7 | 10 | 15 | 18 | 1.5 | 0.3 | 2.94 | 74.1 | 0.017 |
| SA1 15 | SA1 15UU | 15 | 26 | 9 | 12 | 18.4 | 22 | 2.5 | 0.3 | 4.7 | 117 | 0.032 |
| SA1 17 | SA1 17UU | 17 | 30 | 10 | 14 | 20.7 | 25 | 2.5 | 0.3 | 5.88 | 147 | 0.049 |
| SA1 20 | SA1 20UU | 20 | 35 | 12 | 16 | 24.2 | 29 | 2.5 | 0.3 | 8.23 | 205 | 0.065 |
| SA1 25 | SA1 25UU | 25 | 42 | 16 | 20 | 29.3 | 35.5 | 4 | 0.3 | 13.3 | 334 | 0.115 |
| SA1 30 | SA1 30UU | 30 | 47 | 18 | 22 | 34.2 | 40.7 | 4 | 0.3 | 17.3 | 431 | 0.16 |
| SA1 35 | SA1 35UU | 35 | 55 | 20 | 25 | 39.8 | 47 | 4 | 1 | 22.1 | 553 | 0.258 |
| SA1 40 | SA1 40UU | 40 | 62 | 22 | 28 | 45 | 53 | 4 | 1 | 27.5 | 686 | 0.315 |
| SA1 45 | SA1 45UU | 45 | 68 | 25 | 32 | 50.8 | 60 | 6 | 1 | 35.3 | 882 | 0.413 |
| SA1 50 | SA1 50UU | 50 | 75 | 28 | 35 | 56 | 66 | 6 | 1 | 43.5 | 1090 | 0.56 |
| SA1 60 | SA1 60UU | 60 | 90 | 36 | 44 | 66.8 | 80 | 6 | 1.5 | 67.7 | 1700 | 1.1 |
| SA1 70 | SA1 70UU | 70 | 105 | 40 | 49 | 77.9 | 92 | 8 | 1.5 | 86.6 | 2170 | 1.54 |



单位: mm

| 公称型号 | | 主要尺寸 | | | | | | | | 基本额定载荷 | | 质量 kg |
|---------|-----------|---------|---------|-----------|------------------------|----------------|-----|----|-----|---------|----------------------|----------|
| 标准型 | 密封垫片型 | 内径 d | 外径 D | 外圈宽度 B | 内环宽度 B ₁ | d ₁ | Da | H | r | C kN | C ₀ kN | |
| SA1 80 | SA1 80UU | 80 | 120 | 45 | 55 | 89.4 | 105 | 8 | 1.5 | 111 | 2780 | 2.29 |
| SA1 90 | SA1 90UU | 90 | 130 | 50 | 60 | 98.1 | 115 | 8 | 2 | 135 | 3380 | 2.84 |
| SA1 100 | SA1 100UU | 100 | 150 | 55 | 70 | 109.5 | 130 | 8 | 2 | 169 | 4210 | 4.43 |
| SA1 110 | SA1 110UU | 110 | 160 | 55 | 70 | 121.2 | 140 | 8 | 2 | 181 | 4530 | 4.94 |
| SA1 120 | SA1 120UU | 120 | 180 | 70 | 85 | 135.6 | 160 | 8 | 2 | 264 | 6590 | 8.12 |
| SA1 140 | SA1 140UU | 140 | 210 | 70 | 90 | 155.9 | 180 | 8 | 3 | 296 | 7410 | 11.3 |
| SA1 160 | SA1 160UU | 160 | 230 | 80 | 105 | 170.2 | 200 | 10 | 3 | 376 | 9410 | 14.4 |
| SA1 180 | SA1 180UU | 180 | 260 | 80 | 105 | 199 | 225 | 10 | 3 | 424 | 10600 | 18.9 |
| SA1 200 | SA1 200UU | 200 | 290 | 100 | 130 | 213.5 | 250 | 10 | 3 | 588 | 14700 | 28.1 |
| SA1 220 | SA1 220UU | 220 | 320 | 100 | 135 | 239.6 | 275 | 10 | 3.5 | 647 | 16200 | 36.1 |
| SA1 240 | SA1 240UU | 240 | 340 | 100 | 140 | 265.3 | 300 | 10 | 3.5 | 706 | 17600 | 40.4 |

注) 公称型号100或更高的型号为外圈两个缺口类型。