

# Sensor

Optional photo sensors and proximity sensors are available for KR models.

## [Example of Installation]

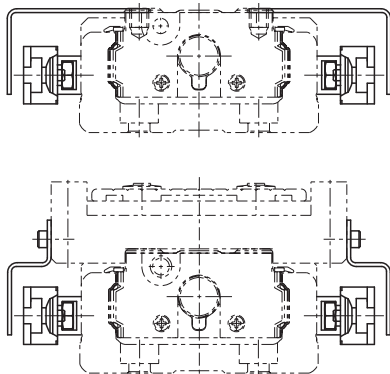


Table14 With/without a sensor

Symbol	Description	Type	Accessory <sup>*1</sup>
0	None	—	—
1	With sensor rail	—	Mounting screws, sensor rail
2	Photo Sensor <sup>2</sup> [3 units]	EE-SX671 (Omron Corp.)	Mounting screw/nut, sensor dog, sensor rail, mounting plate, connector (EE-1001)
6	Photo Sensor <sup>2</sup> [3 units]	EE-SX674 (Omron Corp.)	Mounting screw/nut, sensor dog, sensor rail, mounting plate, connector (EE-1001)
7	Proximity Sensor N.O. contact [3 units]	APM-D3A1-001 (Azbil Corp.)	Mounting screw/nut, sensor dog, sensor rail
B	Proximity Sensor N.C. contact [3 units]	APM-D3B1-003 (Azbil Corp.)	Mounting screw/nut, sensor dog, sensor rail
E	Proximity Sensor N.O. contact [1 unit] N.C. contact [2 units]	APM-D3A1-001 APM-D3B1-003 (Azbil Corp.)	Mounting screw/nut, sensor dog, sensor rail
H	Proximity Sensor N.O. contact [3 units]	GX-F12A (Panasonic Industrial Devices SUNX Co., Ltd.)	Mounting screw/nut, sensor dog, sensor rail
L	Proximity Sensor N.C. contact [3 units]	GX-F12B (Panasonic Industrial Devices SUNX Co., Ltd.)	Mounting screw/nut, sensor dog, sensor rail
J	Proximity Sensor N.O. contact [1 unit] N.C. contact [2 units]	GX-F12A GX-F12B (Panasonic Industrial Devices SUNX Co., Ltd.)	Mounting screw/nut, sensor dog, sensor rail
M	Proximity Sensor N.O. contact [1 unit] N.C. contact [2 units]	GX-F12A-P GX-F12B-P (Panasonic Industrial Devices SUNX Co., Ltd.)	Mounting screw/nut, sensor dog, sensor rail

N.O. contact: normally open contact

N.C. contact: normally closed contact

\*1 If the stroke is less than 70 mm, 2 sensor dogs and 2 sensor rails will be included. KR15, KR20, and KR26 ship with the sensor rail already installed.

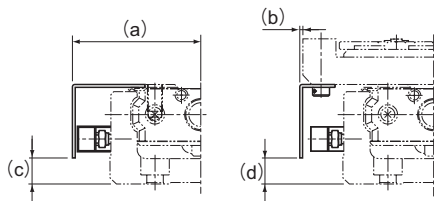
\*2 The photo-sensors can be switched between ON when lit and ON when unlit.

**[Proximity Sensor]**

APM-D3A1-001 (Azbil Corp.)	3 units	GX-F12B (Panasonic Industrial Devices SUNX Co., Ltd.)	3 units
APM-D3B1-003 (Azbil Corp.)	3 units	GX-F12A-P (Panasonic Industrial Devices SUNX Co., Ltd.)	3 units
GX-F12A (Panasonic Industrial Devices SUNX Co., Ltd.)	3 units	GX-F12B-P (Panasonic Industrial Devices SUNX Co., Ltd.)	3 units

● Proximity Sensor: APM-D3A1-001 APM-D3B1-003 (Azbil Corp.)

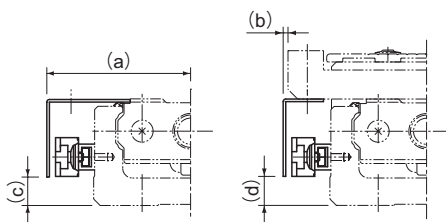
Unit: mm



Model No.	a	b	c	d
KR15	27.8	5.8	1.4	1.4
KR20	32.5	6.6	6	6
KR26	37	6.4	8	8
KR30H	43.3	3.3	8.8	9
KR33	42.5	-0.6	8.8	9
KR45H	53.2	1.2	14	14
KR46	55.4	-0.6	21.8	22
KR55	62.4	0.4	22	22
KR65	77.4	-7.6	25.1	25

● Proximity sensor GX-F12A GX-F12B GX-F12A-P  
GX-F12B-P (Panasonic Industrial Devices SUNX Co., Ltd.)

Unit: mm



Model No.	a	b	c	d
KR20	34	8.1	3.6	4
KR26	38.5	7.9	6	6
KR30H	45	5	8.8	9
KR33	44.5	1.5	8.8	9
KR45H	54.8	2.8	13.8	14
KR46	57.5	1.5	21.8	22
KR55	64.5	2.5	22	22
KR65	79	-6	25.1	25

**[Photo Sensor]**

EE-SX671 (Omron Corp.) 3 units

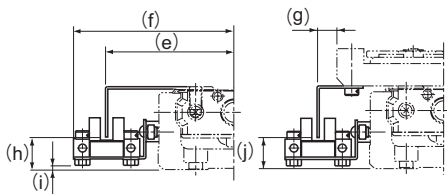
EE-SX674 (Omron Corp.) 3 units

Connector EE-1001 (Omron Corp.) 3 units

Note) The connector is an appended article.

● **Photo Sensor: EE-SX671 (Omron Corp.)**

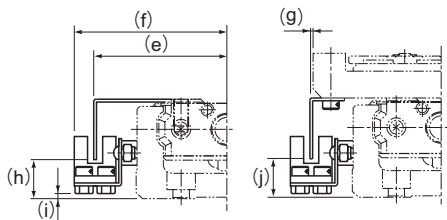
Unit: mm



Model No.	e	f	g	h	i	j
KR20	41.3	53.8	15	9.4	0.9	9.5
KR26	46	58.7	14.9	11.4	2.9	11.5
KR30H	51.3	63.9	11.3	13.8	1.4	13.5
KR33	50.8	63.7	7.7	12.8	2.2	13
KR45H	61.2	73.8	9.3	18.3	6.4	18.5
KR46	63.6	76.6	7.7	25.8	15.2	26
KR55	70.7	83.5	8.6	24.5	13.6	25
KR65	85.5	98.5	0.6	28.1	16.6	28

● **Photo Sensor: EE-SX674 (Omron Corp.)**

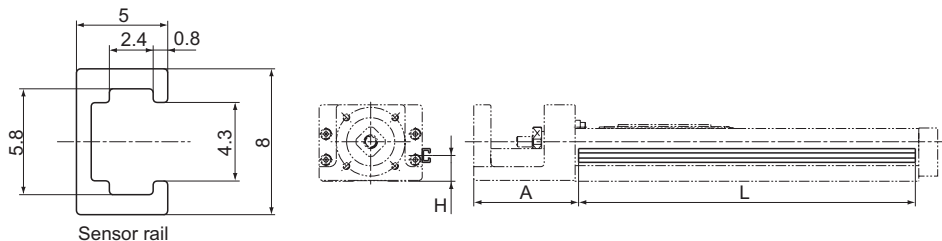
Unit: mm



Model No.	e	f	g	h	i	j
KR20	38.3	44.8	12.5	10.9	0.6	11
KR26	43.5	49.7	12.5	12.9	2.6	13
KR30H	46.2	52.4	6.3	13.8	1.1	14
KR33	44.5	50.7	1.5	12.8	1.7	13
KR45H	56.2	62.3	4.2	19	6.1	19
KR46	57.5	63.6	1.5	25.8	14.1	26
KR55	63.5	70.5	1.5	24.5	13.1	24
KR65	79	85.5	-6	28.6	16.1	28

**[Sensor Rail]**

The sensor rail can be attached alone.



Sensor rail

Unit: mm

Model No.	Stroke*	Outer rail length	H	A	L
KR15	25	75	5.5	37.5	88
	50	100			113
	75	125			138
	100	150			163
	125	175			188
	150	200			213
KR20	30	100	10	43	111
	80	150			161
	130	200			211
KR26	60	150	12	54	161
	110	200			211
	160	250			261
	210	300			311
KR30H	50	150	14	61	146
	100	200			196
	200	300			296
	300	400			396
	400	500			496
	500	600			596
KR33	50	150	15	61	146
	100	200			196
	200	300			296
	300	400			396
	400	500			496
	500	600			596
	600	700			696
KR45H	200	340	19	90	336
	300	440			436
	400	540			536
	500	640			636
	600	740			736
	700	840			836
	800	940			936

\*Indicates stroke length when one long-type inner block is incorporated.

Unit: mm

Model No.	Stroke*	Outer rail length	H	A	L
KR46	190	340	28	89.5	336
	290	440			436
	390	540			536
	490	640			636
	590	740			736
	690	840			836
	790	940			936
KR55	800	980	27	96	976
	900	1080			1076
	1000	1180			1176
	1100	1280			1276
	1200	1380			1376
KR65	790	980	30	102	976
	990	1180			1176
	1190	1380			1376
	1490	1680			1676