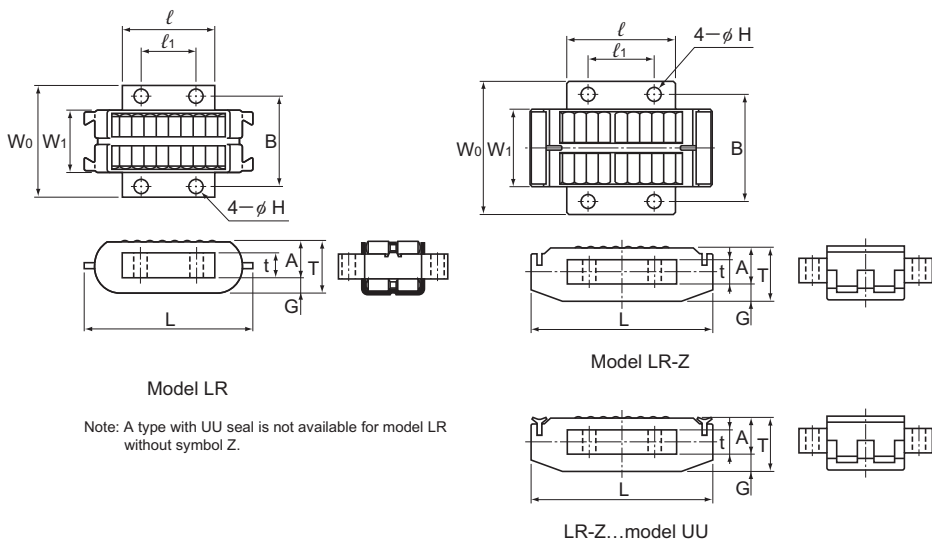


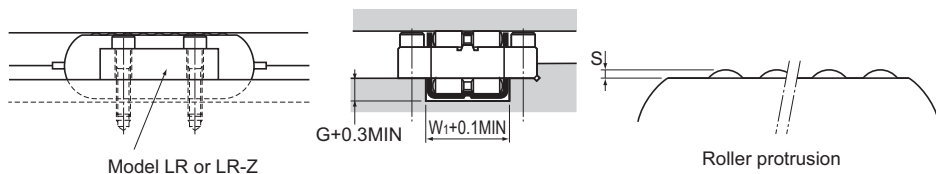
## Models LR and LR-Z



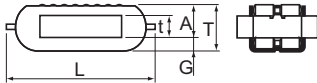
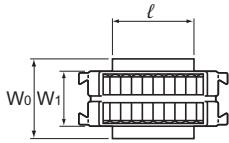
Unit: mm

Model No.	Main dimensions													Mass g	Basic dynamic load rating C kN	Basic static load rating C <sub>0</sub> kN
	W <sub>1</sub>	Length	Thickness	Width	A	t	G	ℓ	Mounting hole pitch			Mounting bolt				
	<sup>0</sup> <sub>-0.1</sub>	L	T	W <sub>0</sub>				<sup>0</sup> <sub>-0.2</sub>	ℓ <sub>1</sub>	B	H	S				
LR 1547Z	15	47	16	30	11	7	5	20	12	23	3.4	0.2	M3*	60	21.6	39.9
LR 2055Z	20	55	17.3	36	12	8	5.3	30	18	29	4.5	0.2	M4*	110	38.9	84.9
LR 2565Z	25	65	20.6	45	14	9	6.6	35	20	36	5.5	0.1	M5*	190	55	113
LR 3275Z	32	75	21.6	55	15	10	6.6	45	27	44	5.5	0.1	M5*	320	88	208
LR 4095	40	95	30	68	21	14	9	55	35	54	6.6	0.3	M6	800	150	326
LR 50130	50	130	42	82	30	20	12	78	50	66	9	0.3	M8	1810	285	577

Note) Using a hexagonal-socket-head type bolt as the mounting bolt marked with \* may cause interference.

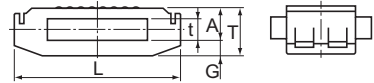
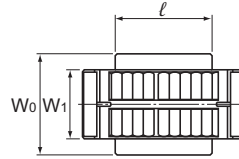


## Models LRA and LRA-Z

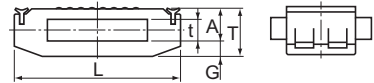


Model LRA

Note: A type with UU seal is not available for model LRA without symbol Z.



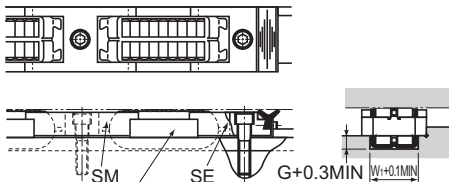
Model LRA-Z



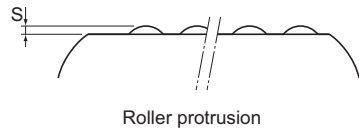
LRA-Z...model UU

Unit: mm

Model No.	Main dimensions										Mass g	Basic dynamic load rating C kN	Basic static load rating C <sub>0</sub> kN
	W <sub>1</sub> 0 -0.1	Length L	Thickness T	Width W <sub>0</sub>	A	t	G	ℓ 0 -0.2	S				
LRA 1547Z	15	47	16	22.2	11	7	5	20	0.2	54	21.6	39.9	
LRA 2055Z	20	55	17.3	30	12	8	5.3	30	0.2	104	38.9	84.9	
LRA 2565Z	25	65	20.6	38.1	14	9	6.6	35	0.1	180	55	113	
LRA 3275Z	32	75	21.6	45	15	10	6.6	45	0.1	310	88	208	
LRA 4095	40	95	30	55	21	14	9	55	0.3	740	150	326	
LRA 50130	50	130	42	76.2	30	20	12	78	0.3	1770	285	577	

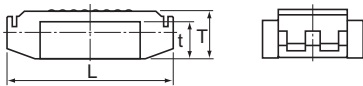
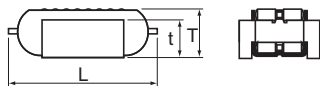
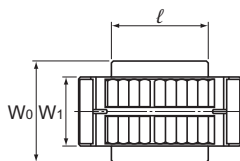
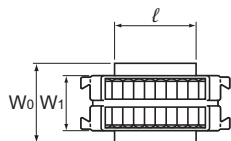


Model LRA or LRA-Z



Roller protrusion

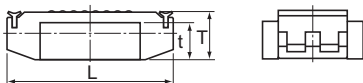
## Models LRB and LRB-Z



Model LRB

Model LRB-Z

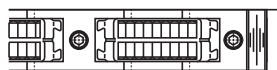
Note: A type with UU seal is not available for model LRB without symbol Z.



LRB-Z...model UU

Unit: mm

Model No.	Main dimensions							Mass g	Basic dynamic load rating C kN	Basic static load rating C <sub>0</sub> kN
	W <sub>1</sub> 0 -0.1	Length L	Width W <sub>0</sub>	Thickness T	t	ℓ 0 -0.2	S			
LRB 1547Z	15	47	22.2	17	13	20	0.2	60	21.6	39.9
LRB 2055Z	20	55	30	18	14	30	0.2	117	38.9	84.9
LRB 2565Z	25	65	38.1	21	16	35	0.1	205	55	113
LRB 3275Z	32	75	45	22	17	45	0.1	340	88	208
LRB 4095	40	95	55	31	24	55	0.3	800	150	326
LRB 50130	50	130	76.2	43	33	78	0.3	1970	285	577

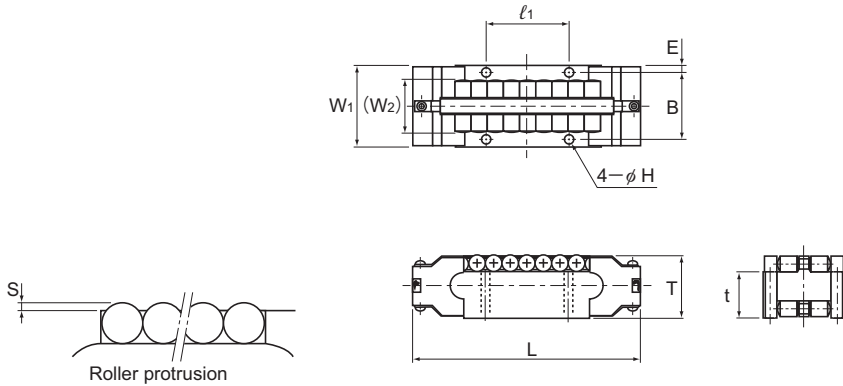


Model LRB or LRB-Z



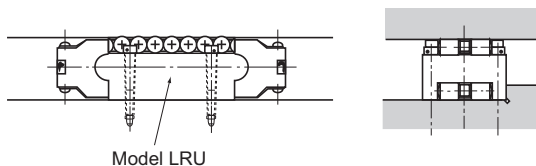
Roller protrusion

# Model LRU



Unit: mm

Model No.	Main dimensions											Mass kg	Basic dynamic load rating C kN	Basic static load rating C <sub>0</sub> kN
	Thick- ness T mm(inch)	Width		W <sub>2</sub>	t	Length		B	H	S	E			
		W <sub>1</sub> mm(inch)	Toler- ance			L mm(inch)	l <sub>1</sub> mm(inch)							
LRU 22.2	14.283 ( <sup>9</sup> / <sub>16</sub> )	22.23 ( <sup>7</sup> / <sub>8</sub> )	0 -0.050	11.4	10.48	51 (2)	19.05 ( <sup>3</sup> / <sub>4</sub> )	17.07	3	0.253	2.58	0.09	22.1	42.5
LRU 25.4	19.05 ( <sup>3</sup> / <sub>4</sub> )	25.4 (1)	0 -0.050	15.4	13.97	73 (2 <sup>7</sup> / <sub>8</sub> )	25.4 (1)	20.6	3.4	0.2	2.4	0.22	41.9	78.9
LRU 38.1	28.573 (1 <sup>1</sup> / <sub>8</sub> )	38.1 (1 <sup>1</sup> / <sub>2</sub> )	0 -0.050	23.5	20.953	101.6 (4)	38.1 (1 <sup>1</sup> / <sub>2</sub> )	30.96	4.5	0.22	3.57	0.7	107	198
LRU 50.8	38.098 (1 <sup>1</sup> / <sub>2</sub> )	50.8 (2)	0 -0.075	31.5	27.938	139.7 (5 <sup>1</sup> / <sub>2</sub> )	50.8 (2)	41.28	5.6	0.46	4.76	1.7	171	296
LRU 76.2	57.15 (2 <sup>1</sup> / <sub>4</sub> )	76.2 (3)	0 -0.075	49.8	41.15	206.4 (8 <sup>1</sup> / <sub>8</sub> )	76.2 (3)	61.9	6.6	0.5	7.15	5.7	478	807

Note) For recommended mounting bolts, see **A10-15**

Model LRU