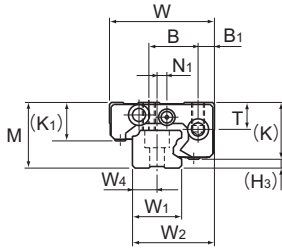
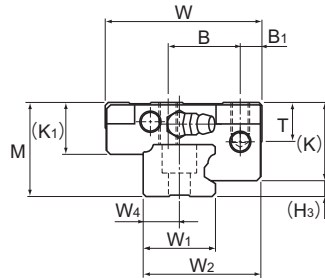


# Models GSR-T and GSR-V



Model GSR15T/V

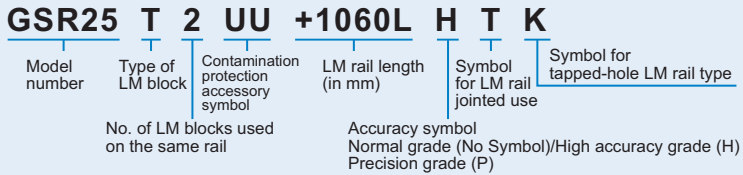


Models GSR20 to 35T, Models GSR20V, and 25V

Model No.	Outer dimensions			LM block dimensions													H <sub>3</sub>
	Height	Width	Length	B <sub>1</sub>	B	C	S × ℓ	L <sub>1</sub>	T	K	K <sub>1</sub>	N	N <sub>1</sub>	E	Grease nipple		
	M	W	L														
GSR 15V GSR 15T	20	32	47.1 59.8	5	15	— 26	M4 × 7	27.5 40.2	8.25	16.8	12	4.5	3	5.5	PB107	3.2	
GSR 20V GSR 20T	24	43	58.1 74	7	20	— 30	M5 × 8	34.3 50.2	9.7	20.6	13.6	5	—	12	B-M6F	3.4	
GSR 25V GSR 25T	30	50	69 88	7	23	— 40	M6 × 10	41.2 60.2	12.7	25.4	16.8	7	—	12	B-M6F	4.6	
GSR 30T	33	57	103	8	26	45	M8 × 12	70.3	14.6	28.5	18	7	—	12	B-M6F	4.5	
GSR 35T	38	68	117	9	32	50	M8 × 15	80.3	15.6	32.5	20.5	8	—	12	B-M6F	5.5	

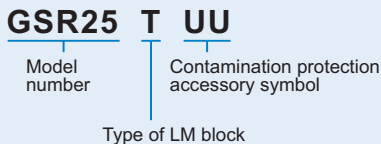
## Model number coding

Combination of LM rail and LM block

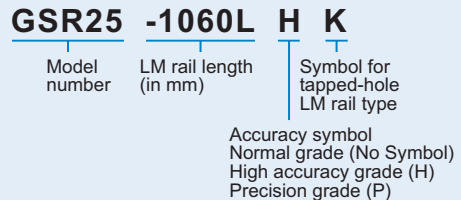


Note) One set of model GSR: This model number indicates that a single-rail unit constitutes one set.  
See **A1-545** for contamination protection accessories. See **A1-84** for accuracy symbol.

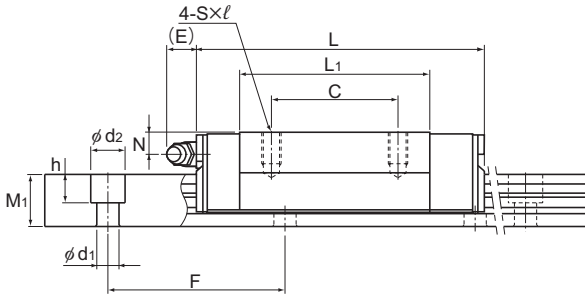
LM block



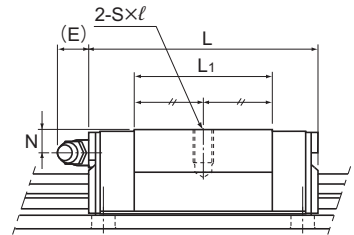
LM rail



Note) See **A1-545** for contamination protection accessories. See **A1-84** for accuracy symbol.



Models GSR15 to 35T



Models GSR15 to 25V

Unit: mm

LM rail dimensions								Basic load rating		Static permissible moment kN·m*				Mass	
Width	W <sub>1</sub>	W <sub>2</sub>	W <sub>4</sub>	Height	Pitch	Length*	Max	C	C <sub>0</sub>	M <sub>a</sub>		M <sub>b</sub>		LM block	LM rail
										1 block	Double blocks	1 block	Double blocks		
15	25	7.5	11.5	60	4.5×7.5×5.3	2000	6.51 8.42	6.77 9.77	0.0305 0.0606	0.19 0.337	0.0264 0.0523	0.165 0.29	0.08 0.13	1.2	
20	33	10	13	60	6×9.5×8.5	3000	10.5 13.6	10.6 15.3	0.06 0.118	0.368 0.652	0.052 0.102	0.318 0.562	0.17 0.25	1.8	
23	38	11.5	16.5	60	7×11×9	3000	15.5 20	15.2 22	0.102 0.205	0.625 1.11	0.0891 0.176	0.541 0.961	0.29 0.5	2.6	
28	44.5	14	19	80	9×14×12	3000	27.8	29.9	0.325	1.77	0.28	1.52	0.6	3.6	
34	54	17	22	80	11×17.5×14	3000	37	39.1	0.485	2.63	0.419	2.27	1	5	

Note1) The maximum length under "Length\*" indicates the standard maximum length of an LM rail. (See [A1-292](#).)

Static permissible moment\* 1 block: the static permissible moment with one LM block

Double blocks: static permissible moment when two LM blocks are in close contact with each other

A moment in the M<sub>b</sub> direction can be received if two rails are used in parallel. However, since it depends on the distance between the two rails, it has been omitted.

Total block length L : The total block length L shown in the table is the length with the dust proof parts, code UU or SS. If other contamination protection accessories or lubricant equipment are installed, the total block length will increase. (See [A1-519](#) or [A1-541](#))

For oil lubrication, be certain to contact THK with the mounting orientation.

(Mounting orientation: see [A1-12](#), Lubricant: see [A24-2](#))

Note2) The basic load rating in the dimension table is for a load in the radial direction. Use Table 7 on [A1-61](#) to calculate the load rating for loads in the reverse radial direction or lateral direction.