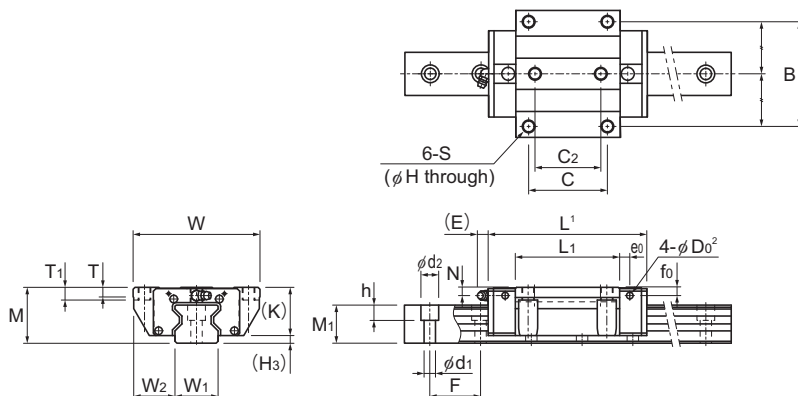


Models SRN-C, SRN-LC, and SRN-SLC



Models SRN55 and 65 C/LC

Model No.	Outer dimensions			LM block dimensions												Pilot hole for side nipple			
	Height	Width	Length ¹												Grease nipple				
	M	W	L	B	C	C ₂	S	H	L ₁	T	T ₁	K	N	E		e ₀	f ₀	D ₀ ²	
SRN 55C SRN 55GC	63	140	185	116	95	70	M14	12.5	129	18.2	18	53	8	16	B-PT1/8	10	9.8	5.2	10
SRN 55LC SRN 55GLC	63	140	235	116	95	70	M14	12.5	179.2	18.2	18	53	8	16	B-PT1/8	10	9.8	5.2	10
SRN 55SLC SRN 55GSLC	63	140	292	116	150	—	M14	12.5	236.2	18.2	18	53	8	16	B-PT1/8	10	9.8	5.2	10
SRN 65C SRN 65GC	75	170	244.9	142	110	82	M16	14.5	171.7	21.2	20	65	14	16	B-PT1/8	9	13	5.2	10
SRN 65LC SRN 65GLC	75	170	303	142	110	82	M16	14.5	229.8	21.2	20	65	14	16	B-PT1/8	9	13	5.2	10
SRN 65SLC SRN 65GSLC	75	170	380	142	200	—	M16	14.5	306.8	21.2	20	65	14	16	B-PT1/8	9	13	5.2	10

Model number coding

SRN65 C 2 QZ KK C0 +1270L P Z T - II

Model
number

Type of
LM block

With QZ
lubricator

Contamination
protection
accessory
symbol

LM rail length
(in mm)

With plate
cover

Symbol for No. of
rails used on the
same plane

No. of LM blocks
used on the same
rail

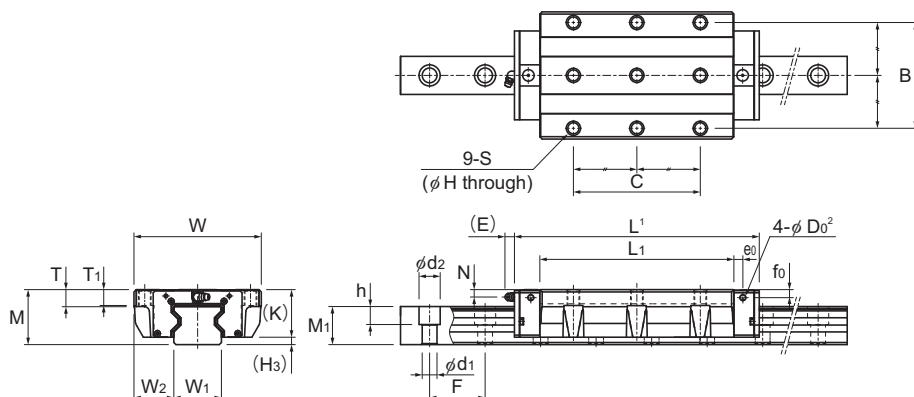
Radial clearance symbol
Normal (No symbol)/Light preload (C1)
Medium preload (C0)/Heavy preload (CN1)
Super heavy preload (CN2)

Accuracy symbol
High accuracy grade (H)/Precision grade (P)
Super precision grade (SP)/Ultra precision grade (UP)

Symbol for LM rail
jointed use

Notes: This model number indicates that a single-rail unit constitutes one set (i.e., required number of sets when 2 rails are used in parallel is 2 at a minimum).

Grease nipples are not installed when there is a QZ Lubricator. Contact THK if you want to use a grease nipple for a model with a QZ. See **A1-547** for contamination protection accessories, see **A1-75** for radial clearance symbol, See **A1-79** for accuracy symbol. See **A1-13** for symbol for number of rails used on the same plane.



Models SRN55 and 65 SLC

Unit: mm

LM rail dimensions						Basic load rating ¹		Static permissible moment kN·m ⁵					Mass	
Width	Height	Pitch		Length ³		C	C ₀	M_A		M_B		M_C	LM block	LM rail
W_1 0 -0.05	W_2	M_1	F	$d_1 \times d_2 \times h$	Max	kN	kN	1 block	2 blocks	1 block	2 blocks	1 block	kg	kg/m
53	43.5	43	60	16×23×20	3060	131 125	266 300	5.82 6.5	33 37.2	5.82 6.5	33 37.2	8.19 9.55	5.1	15.8
53	43.5	43	60	16×23×20	3060	167 160	366 411	10.8 12.1	57 64	10.8 12.1	57 64	11.2 13.1	7.1	15.8
53	43.5	43	60	16×23×20	3060	210 199	488 544	19.1 21	93.7 104	19.1 21	93.7 104	15.6 17.3	9.4	15.8
63	53.5	49	75	18×26×22	3000	219 214	441 511	12.5 14.8	72.8 83.8	12.5 14.8	72.8 83.8	16.8 19.4	10.4	21.3
63	53.5	49	75	18×26×22	3000	278 264	599 670	22.7 25.3	120 135	22.7 25.3	120 135	22.1 25.5	13.9	21.3
63	53.5	49	75	18×26×22	3000	352 332	811 899	41.3 45.2	202 224	41.3 45.2	202 224	30.9 25.6	18.5	21.3

¹ Length L shown in the table is the length with the contamination protection accessories, code UU or SS.If other contamination protection accessories or lubricant equipment are installed, the total block length will increase. (See **A1-521** or **A1-543**)² D₀ are the pilot holes for when a grease nipple is desired for a product with LaCS or a QZ Lubricator.

Pilot holes are not drilled through for models other than those stated above.

For grease nipple mount machining, contact THK.

³ The maximum length indicates the standard maximum length of an LM rail. (See **A1-456**.)⁴ The basic dynamic load rating of the roller guide is a value based on a nominal life of 100 km.

The conversion to basic dynamic load rating for a nominal life of 50 km can be obtained from the following equation.

$$C_{50} = C \times 1.23$$

C₅₀ : The basic dynamic load rating for a nominal load of 50 km

C : The basic dynamic load rating in the dimensional table

⁵ Static permissible moment

1 block: the static permissible moment with one LM block

2 blocks: the static permissible moment with two LM blocks in close contact with each other

Notes: The SRN-G is a cageless, Full-Roller type.

For oil lubrication, be certain to let THK know the mounting orientation and where the LM block piping joint should be attached.

(Mounting orientation: see **A1-12**, Lubricant: see **A24-2**)

The removing/mounting jig is not provided as standard. To obtain one, please contact THK.