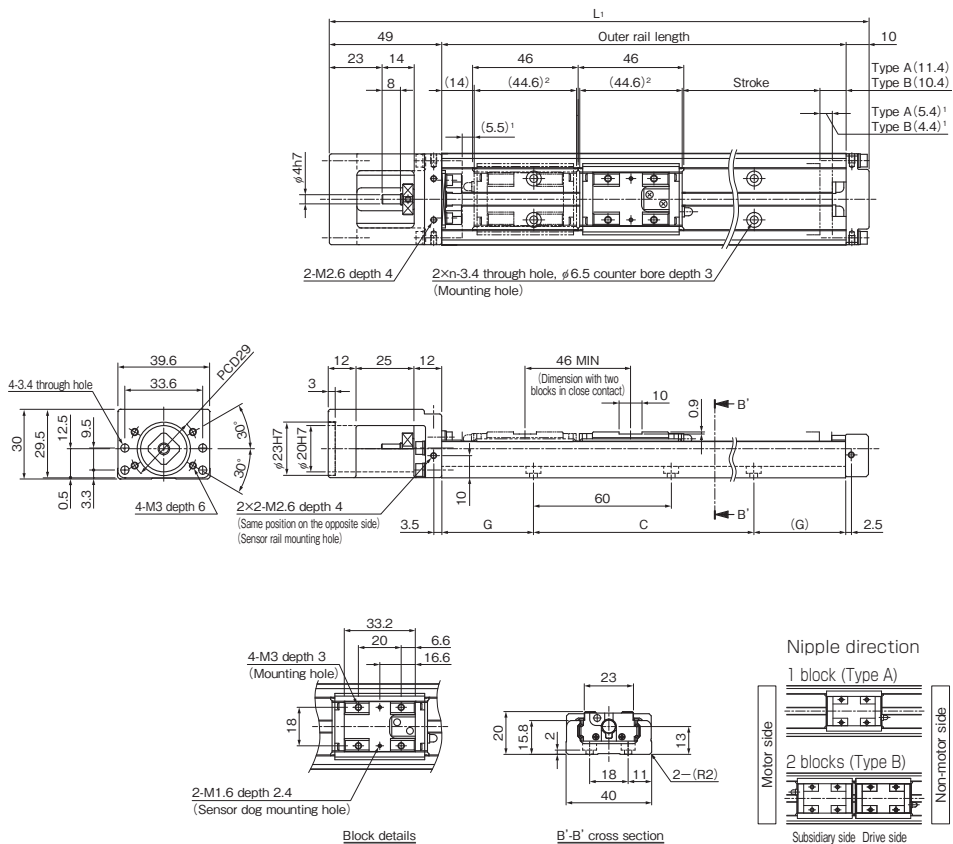


SKR20 Without Cover, Direct Motor Coupling

Model SKR20□□A (with a Single Long Block)

Model SKR20□□B (with Two Long Blocks)

For model number coding, see **A2-28**.



¹ Distance between the mechanical stopper and the stroke starting position.

² This indicates the block length when calculating the possible stroke range.

It is 90.6 mm (total) for an SKR20 with two blocks in close contact with each other (Type B).

Stroke (mm) (stroke between mechanical stoppers)		Outer rail length (mm)	Overall length L_1 (mm)	C (mm)	G (mm)	n	Overall main unit mass (kg)	
Type A	Type B ¹						Type A	Type B
30 (40.9)	—	100	159	60	20	2	0.47	—
80 (90.9)	35 (44.9)	150	209	120	15	3	0.6	0.67
130 (140.9)	85 (94.9)	200	259	120	40	3	0.74	0.81

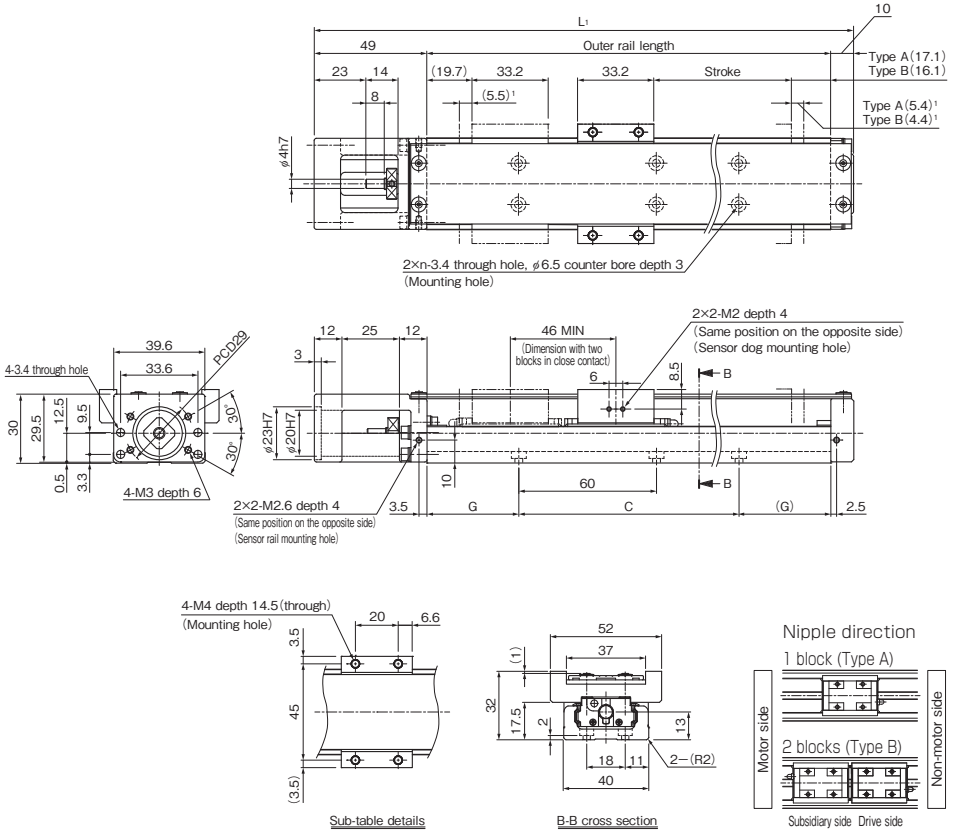
¹ Indicates a value when two inner blocks are in close contact with each other.

SKR20 With Cover, Direct Motor Coupling

Model SKR20□□A (with a Single Long Block)

Model SKR20□□B (with Two Long Blocks)

For model number coding, see **A2-28**.



¹ Distance between the mechanical stopper and the stroke starting position.

Stroke (mm) (stroke between mechanical stoppers)		Outer rail length (mm)	Overall length L ₁ (mm)	C (mm)	G (mm)	n	Overall main unit mass (kg)	
Type A	Type B ¹						Type A	Type B
30 (40.9)	—	100	159	60	20	2	0.55	—
80 (90.9)	35 (44.9)	150	209	120	15	3	0.69	0.81
130 (140.9)	85 (94.9)	200	259	120	40	3	0.84	0.96

¹ Indicates a value when two inner blocks are in close contact with each other.