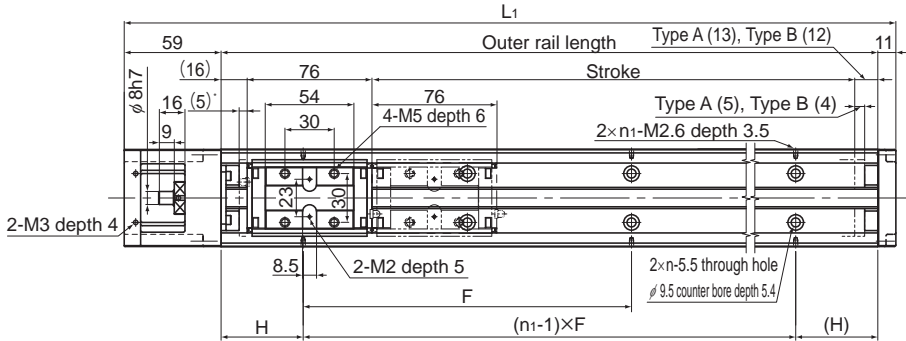


Model SKR33 Standard Type

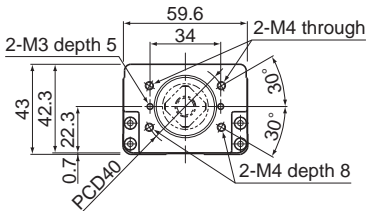
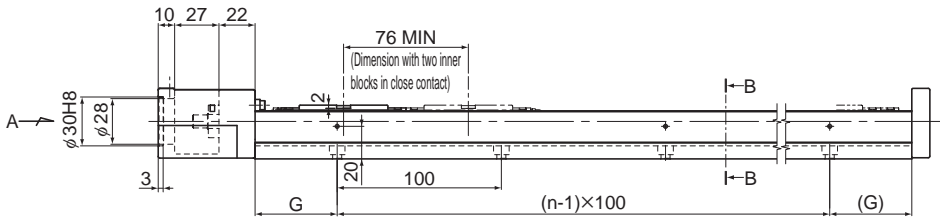
Model SKR33□□A (with a Single Long Nut Block)

Model SKR33□□B (with Two Long Nut Blocks)

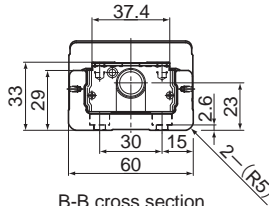
For model number coding, see **A2-28**.



* Distance between the mechanical stopper and the stroke starting position.



A arrow view



B-B cross section

Stroke (mm) (stroke between mechanical stoppers)		Outer rail length (mm)	Overall length L ₁ (mm)	H (mm)	G (mm)	F (mm)	n	n ₁	Overall main unit mass (kg)	
Type A	Type B								Type A	Type B
45(55)	—	150	220	25	25	100	2	2	1.9	—
95(105)	—	200	270	50	50	100	2	2	2.3	—
195(205)	120(129)	300	370	50	50	200	3	2	3	3.4
295(305)	220(229)	400	470	100	50	200	4	2	3.7	4.1
395(405)	320(329)	500	570	50	50	200	5	3	4.5	4.9
495(505)	420(429)	600	670	100	50	200	6	3	5.2	5.6
595(605)	520(529)	700	770	50	50	200	7	4	5.9	6.3

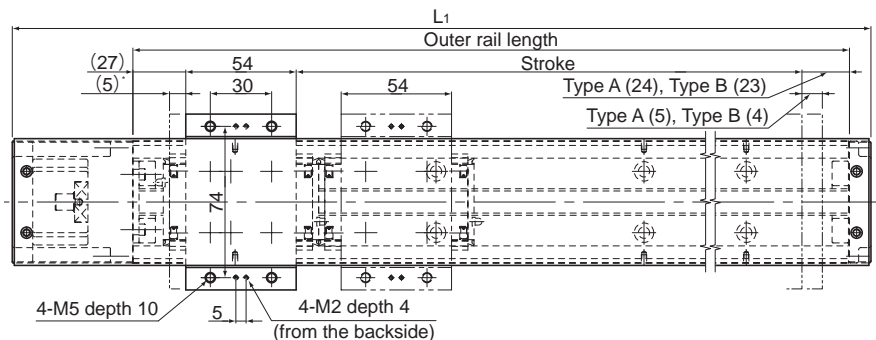
*Indicates a value when two inner blocks are in close contact with each other.

Model SKR33 (with a Cover)

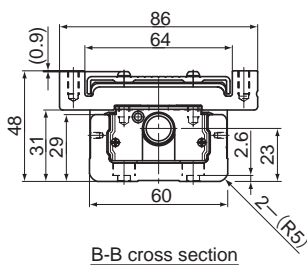
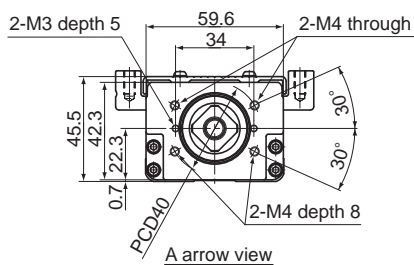
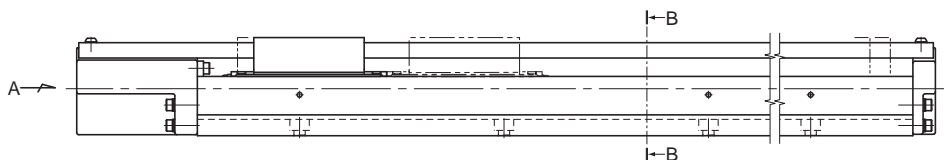
Model SKR33□□A (with a Single Long Nut Block)

Model SKR33□□B (with Two Long Nut Blocks)

For model number coding, see **A2-28**.



* Distance between the mechanical stopper and the stroke starting position.



Stroke (mm) (stroke between mechanical stoppers)		Outer rail length (mm)	Overall length L(mm)	H (mm)	G (mm)	F (mm)	n	n ₁	Overall main unit mass (kg)	
Type A	Type B*								Type A	Type B
45(55)	—	150	220	25	25	100	2	2	2.3	—
95(105)	—	200	270	50	50	100	2	2	2.6	—
195(205)	120(129)	300	370	50	50	200	3	2	3.4	4
295(305)	220(229)	400	470	100	50	200	4	2	4.2	4.8
395(405)	320(329)	500	570	50	50	200	5	3	4.9	5.5
495(505)	420(429)	600	670	100	50	200	6	3	5.7	6.3
595(605)	520(529)	700	770	50	50	200	7	4	6.4	7

*Indicates a value when two inner blocks are in close contact with each other.