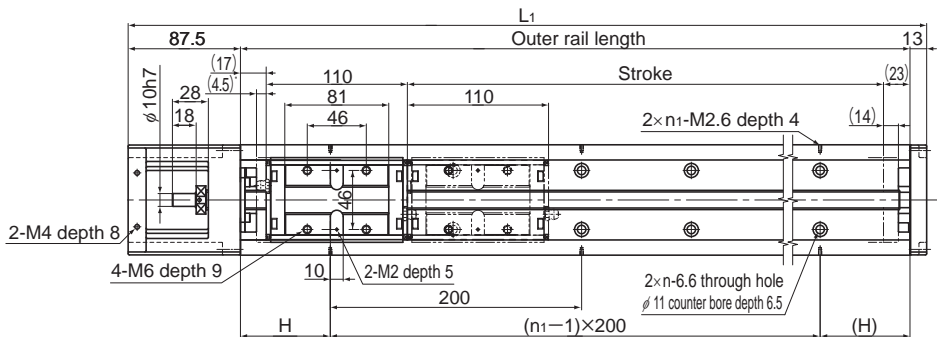


Model SKR46 Standard Type

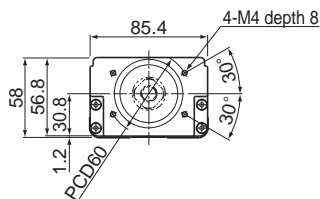
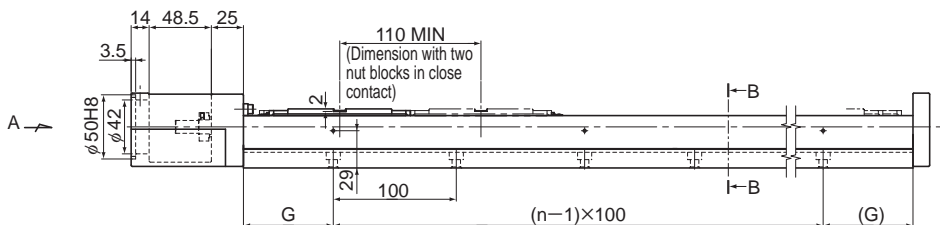
Model SKR46□□A (with a Single Long Nut Block)

Model SKR46□□B (with Two Long Nut Blocks)

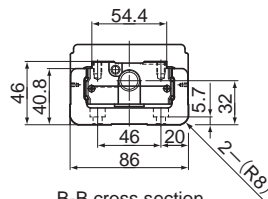
For model number coding, see **A2-28**.



* Distance between the mechanical stopper and the stroke starting position.



A arrow view



B-B cross section

| Stroke (mm) (stroke between mechanical stoppers) | | Outer rail length (mm) | Overall length L_1 (mm) | H (mm) | G (mm) | n | n_1 | Overall main unit mass (kg) | |
|---|------------|---------------------------|------------------------------|-----------|-----------|---|-------|-----------------------------|--------|
| Type A | Type B | | | | | | | Type A | Type B |
| 190(208.5) | 80(98.5) | 340 | 440.5 | 70 | 70 | 3 | 2 | 6.7 | 7.7 |
| 290(308.5) | 180(198.5) | 440 | 540.5 | 20 | 70 | 4 | 3 | 8.1 | 9.1 |
| 390(408.5) | 280(298.5) | 540 | 640.5 | 70 | 70 | 5 | 3 | 9.5 | 10.5 |
| 490(508.5) | 380(398.5) | 640 | 740.5 | 20 | 70 | 6 | 4 | 10.9 | 11.9 |
| 590(608.5) | 480(498.5) | 740 | 840.5 | 70 | 70 | 7 | 4 | 12.3 | 13.3 |
| 690(708.5) | 580(598.5) | 840 | 940.5 | 20 | 70 | 8 | 5 | 13.8 | 14.8 |
| 790(808.5) | 680(698.5) | 940 | 1040.5 | 70 | 70 | 9 | 5 | 15.2 | 16.2 |

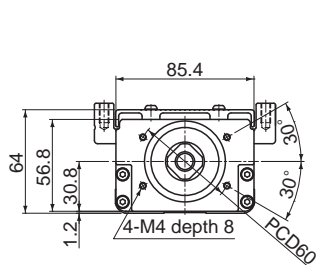
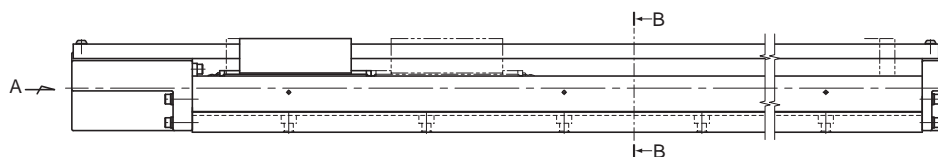
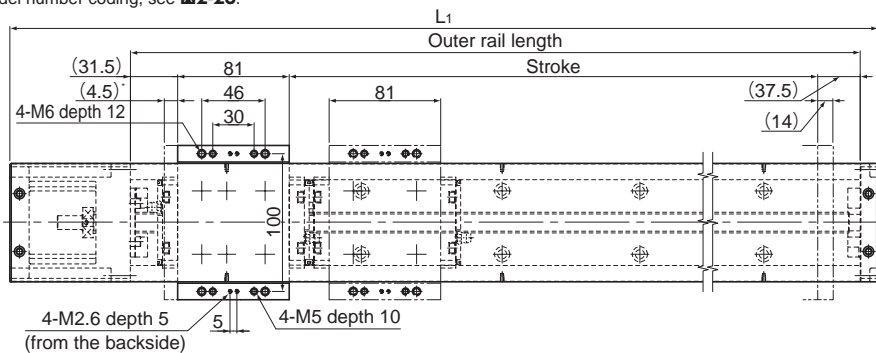
*Indicates a value when two inner blocks are in close contact with each other.

Model SKR46 (with a Cover)

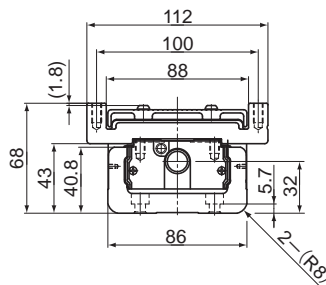
Model SKR46□□A (with a Single Long Nut Block)

Model SKR46□□B (with Two Long Nut Blocks)

For model number coding, see **A2-28**.



A arrow view



B-B cross section

| Stroke (mm) (stroke between mechanical stoppers) | | Outer rail length (mm) | Overall length L:(mm) | H (mm) | G (mm) | n | n ₁ | Overall main unit mass (kg) | |
|---|------------|---------------------------|--------------------------|-----------|-----------|---|----------------|-----------------------------|--------|
| Type A | Type B* | | | | | | | Type A | Type B |
| 190(208.5) | 80(98.5) | 340 | 440.5 | 70 | 70 | 3 | 2 | 7.7 | 9.1 |
| 290(308.5) | 180(198.5) | 440 | 540.5 | 20 | 70 | 4 | 3 | 9.2 | 10.6 |
| 390(408.5) | 280(298.5) | 540 | 640.5 | 70 | 70 | 5 | 3 | 10.7 | 12.1 |
| 490(508.5) | 380(398.5) | 640 | 740.5 | 20 | 70 | 6 | 4 | 12.2 | 13.6 |
| 590(608.5) | 480(498.5) | 740 | 840.5 | 70 | 70 | 7 | 4 | 13.7 | 15.1 |
| 690(708.5) | 580(598.5) | 840 | 940.5 | 20 | 70 | 8 | 5 | 15.2 | 16.6 |
| 790(808.5) | 680(698.5) | 940 | 1040.5 | 70 | 70 | 9 | 5 | 16.7 | 18.1 |

*Indicates a value when two inner blocks are in close contact with each other.