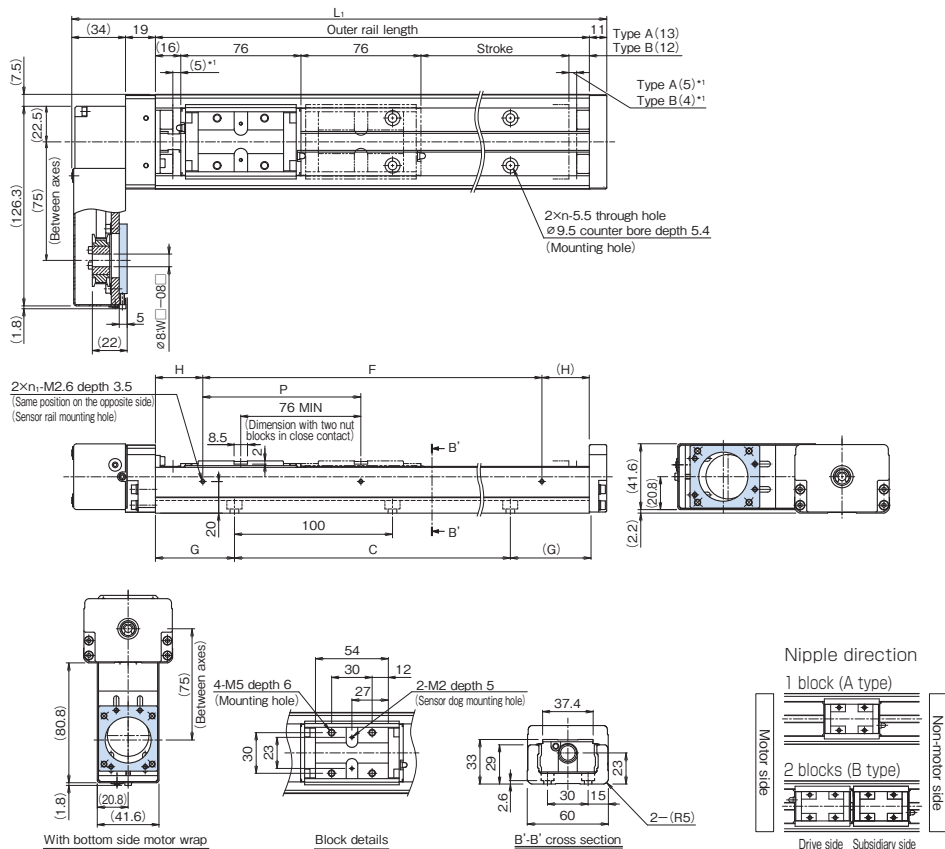


SKR33 Without Cover, Motor Wrap

Model SKR33□□A (with a Single Long Nut Block)

Model SKR33□□B (with Two Long Nut Blocks)

For model number coding, see **A2-28**.



*1 Distance between the mechanical stopper and the stroke starting position.

| Stroke (mm) (stroke between mechanical stoppers) | | Outer rail length (mm) | Overall length L ₁ (mm) | C (mm) | G (mm) | P (mm) | F (mm) | H (mm) | n | n ₁ | Overall main unit mass (kg) | |
|---|-----------|---------------------------|---------------------------------------|-----------|-----------|-----------|-----------|-----------|---|----------------|-----------------------------|--------|
| Type A | Type B | | | | | | | | | | Type A | Type B |
| 45 (55) | — | 150 | 214 | 100 | 25 | 100 | 100 | 25 | 2 | 2 | 2.2 | — |
| 95 (105) | — | 200 | 264 | 100 | 50 | 100 | 100 | 50 | 2 | 2 | 2.6 | — |
| 195 (205) | 120 (129) | 300 | 364 | 200 | 50 | 200 | 200 | 50 | 3 | 2 | 3.3 | 3.7 |
| 295 (305) | 220 (229) | 400 | 464 | 300 | 50 | 200 | 200 | 100 | 4 | 2 | 4 | 4.4 |
| 395 (405) | 320 (329) | 500 | 564 | 400 | 50 | 200 | 400 | 50 | 5 | 3 | 4.8 | 5.2 |
| 495 (505) | 420 (429) | 600 | 664 | 500 | 50 | 200 | 400 | 100 | 6 | 3 | 5.5 | 5.9 |
| 595 (605) | 520 (529) | 700 | 764 | 600 | 50 | 200 | 600 | 50 | 7 | 4 | 6.2 | 6.6 |

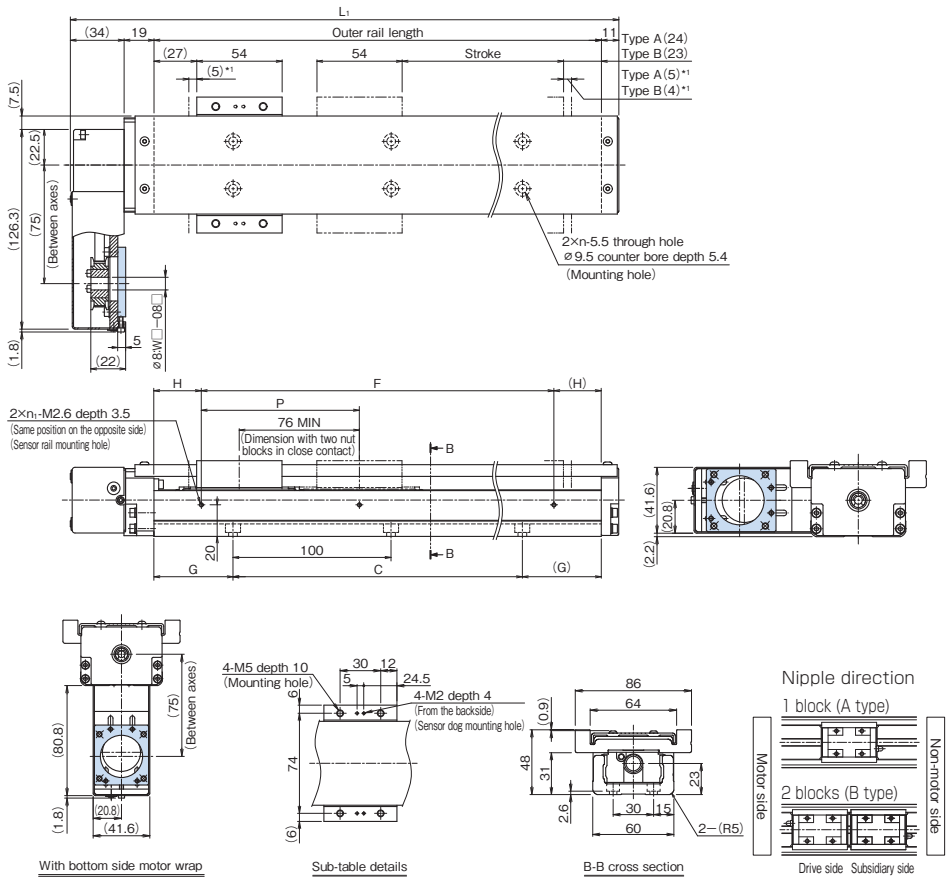
*Indicates a value when two inner blocks are in close contact with each other.

SKR33 With Cover, Motor Wrap

Model SKR33□□A (with a Single Long Nut Block)

Model SKR33□□B (with Two Long Nut Blocks)

For model number coding, see **A2-28**.



*1 Distance between the mechanical stopper and the stroke starting position.

| Stroke (mm) (stroke between mechanical stoppers) | | Outer rail length (mm) | Overall length L ₁ (mm) | C (mm) | G (mm) | P (mm) | F (mm) | H (mm) | n | n ₁ | Overall main unit mass (kg) | |
|---|-----------|------------------------|------------------------------------|--------|--------|--------|--------|--------|---|----------------|-----------------------------|--------|
| Type A | Type B* | | | | | | | | | | Type A | Type B |
| 45 (55) | — | 150 | 214 | 100 | 25 | 100 | 100 | 25 | 2 | 2 | 2.5 | — |
| 95 (105) | — | 200 | 264 | 100 | 50 | 100 | 100 | 50 | 2 | 2 | 2.9 | — |
| 195 (205) | 120 (129) | 300 | 364 | 200 | 50 | 200 | 200 | 50 | 3 | 2 | 3.7 | 4.3 |
| 295 (305) | 220 (229) | 400 | 464 | 300 | 50 | 200 | 200 | 100 | 4 | 2 | 4.4 | 5 |
| 395 (405) | 320 (329) | 500 | 564 | 400 | 50 | 200 | 400 | 50 | 5 | 3 | 5.2 | 5.8 |
| 495 (505) | 420 (429) | 600 | 664 | 500 | 50 | 200 | 400 | 100 | 6 | 3 | 6 | 6.6 |
| 595 (605) | 520 (529) | 700 | 764 | 600 | 50 | 200 | 600 | 50 | 7 | 4 | 6.7 | 7.3 |

*Indicates a value when two inner blocks are in close contact with each other.

Options⇒ **A2-65**

THK

A2-41