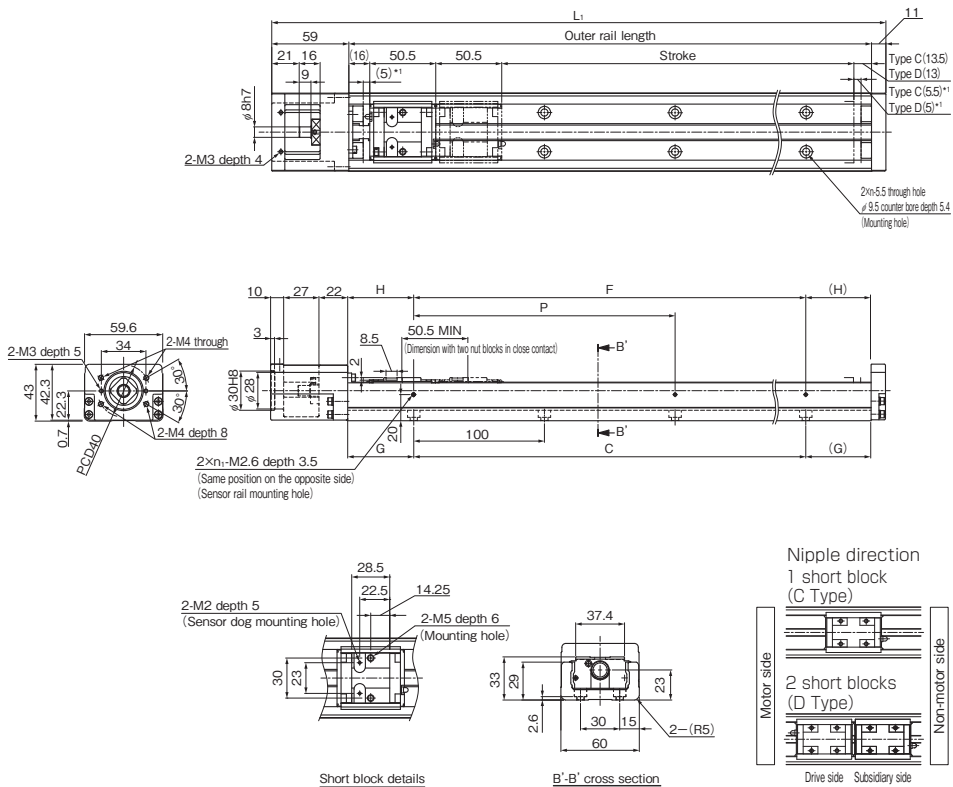


SKR33 Without Cover, Direct Motor Coupling

Model SKR33□□C (with a Single Short Nut Block)

Model SKR33□□D (with Two Short Nut Blocks)

For model number coding, see **A2-28**.



*1 Distance between the mechanical stopper and the stroke starting position.

Stroke (mm) (stroke between mechanical stoppers)		Outer rail length (mm)	Overall length L ₁ (mm)	C (mm)	G (mm)	P (mm)	F (mm)	H (mm)	n	n ₁	Overall main unit mass (kg)	
Type C	Type D										Type C	Type D
70 (80.5)	20 (30)	150	220	100	25	100	100	25	2	2	1.7	1.9
120 (130.5)	70 (80)	200	270	100	50	100	100	50	2	2	2.1	2.3
220 (230.5)	170 (180)	300	370	200	50	200	200	50	3	2	2.8	3
320 (330.5)	270 (280)	400	470	300	50	200	200	100	4	2	3.5	3.7
420 (430.5)	370 (380)	500	570	400	50	200	400	50	5	3	4.3	4.5
520 (530.5)	470 (480)	600	670	500	50	200	400	100	6	3	5	5.2
620 (630.5)	570 (580)	700	770	600	50	200	600	50	7	4	5.7	5.9

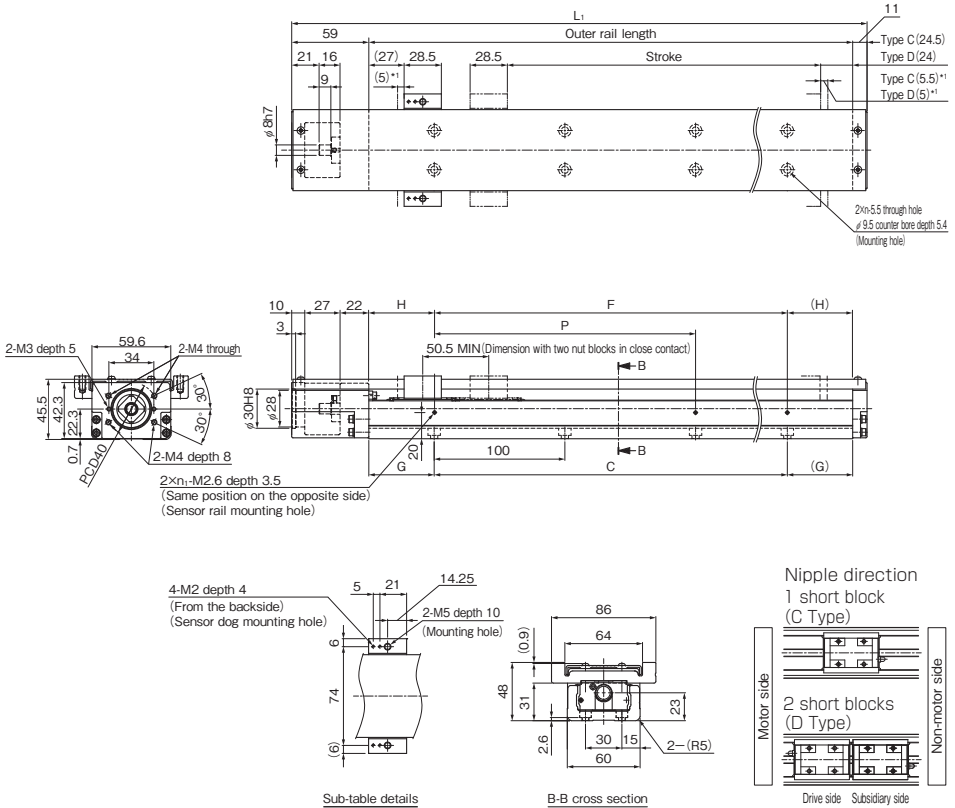
*Indicates a value when two inner blocks are in close contact with each other.

SKR33 With Cover, Direct Motor Coupling

Model SKR33□□C (with a Single Short Nut Block)

Model SKR33□□D (with Two Short Nut Blocks)

For model number coding, see **A2-28**.



*1 Distance between the mechanical stopper and the stroke starting position.

Stroke (mm) (stroke between mechanical stoppers)		Outer rail length (mm)	Overall length L ₁ (mm)	C (mm)	G (mm)	P (mm)	F (mm)	H (mm)	n	n ₁	Overall main unit mass (kg)	
Type C	Type D										Type C	Type D
70 (80.5)	20 (30)	150	220	100	25	100	100	25	2	2	2	2.3
120 (130.5)	70 (80)	200	270	100	50	100	100	50	2	2	2.3	2.6
220 (230.5)	170 (180)	300	370	200	50	200	200	50	3	2	3.1	3.4
320 (330.5)	270 (280)	400	470	300	50	200	200	100	4	2	3.9	4.2
420 (430.5)	370 (380)	500	570	400	50	200	400	50	5	3	4.6	4.9
520 (530.5)	470 (480)	600	670	500	50	200	400	100	6	3	5.4	5.7
620 (630.5)	570 (580)	700	770	600	50	200	600	50	7	4	6.1	6.4

*Indicates a value when two inner blocks are in close contact with each other.