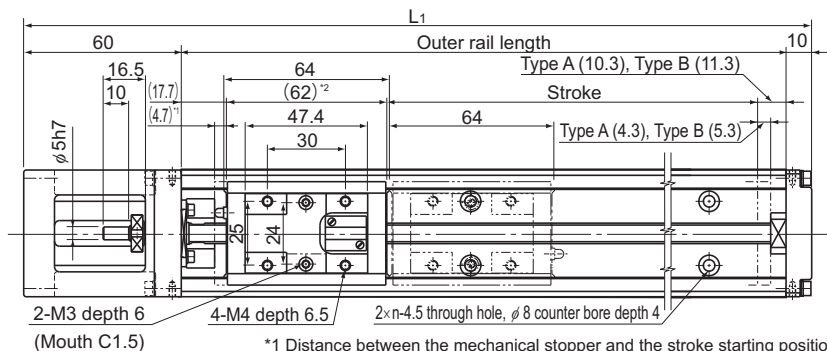


Model KR26 Standard Type

Model KR26□□A (with a Single Long Nut Block)

Model KR26□□B (with Two Long Nut Blocks)

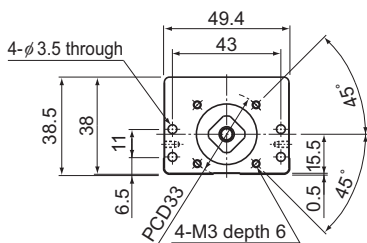
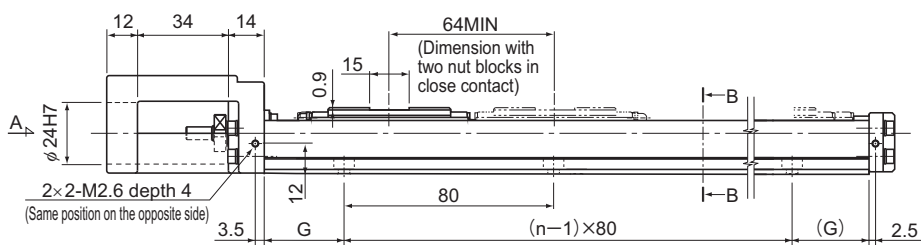
For model number coding, see **A2-106**.



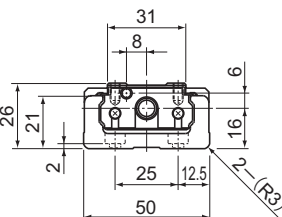
*1 Distance between the mechanical stopper and the stroke starting position.

*2 Indicates the inner block length when calculating the available stroke range.

The length in model KR-B (with two long-type inner blocks) is 126 mm.

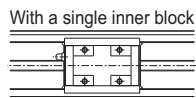


A arrow view

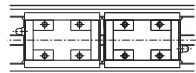


B-B cross section

Nipple orientation



With two inner blocks



Stroke (mm) (stroke between mechanical stoppers)		Outer rail length (mm)	Overall length L_1 (mm)	G (mm)	n	Overall main unit mass (kg)	
Type A	Type B [*]					Type A	Type B
60(69)	—	150	220	35	2	1.04	—
110(119)	45(55)	200	270	20	3	1.25	1.44
160(169)	95(105)	250	320	45	3	1.46	1.65
210(219)	145(155)	300	370	30	4	1.67	1.86

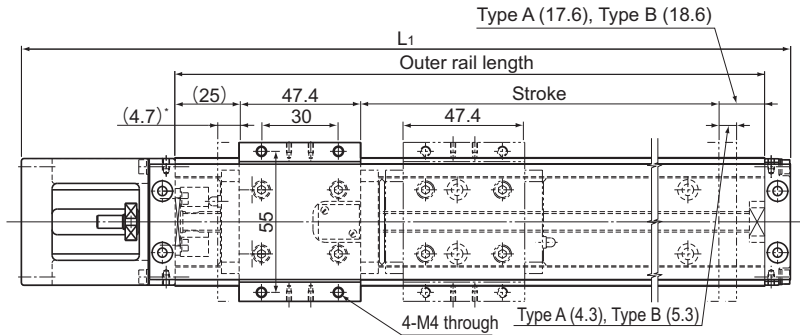
*Indicates a value when two inner blocks are in close contact with each other.

Model KR26 (with a Cover)

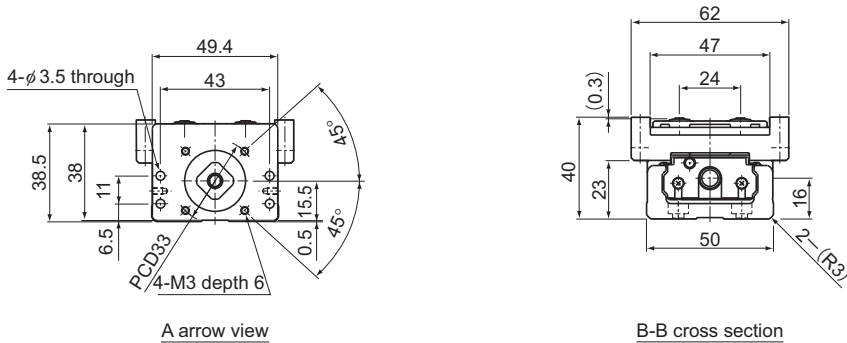
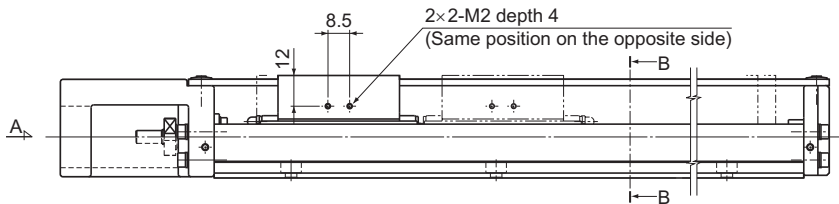
Model KR26□□A (with a Single Long Nut Block)

Model KR26□□B (with Two Long Nut Blocks)

For model number coding, see **A2-106**.



* Distance between the mechanical stopper and the stroke starting position.



Stroke (mm) (stroke between mechanical stoppers)		Outer rail length (mm)	Overall length L ₁ (mm)	Overall main unit mass (kg)	
Type A	Type B			Type A	Type B
60(69)	—	150	220	1.2	—
110(119)	45(55)	200	270	1.42	1.7
160(169)	95(105)	250	320	1.65	1.93
210(219)	145(155)	300	370	1.87	2.15

*Indicates a value when two inner blocks are in close contact with each other.