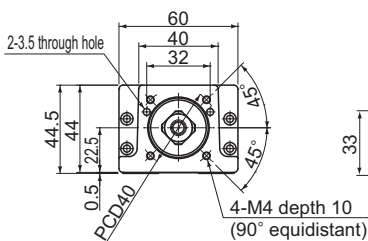
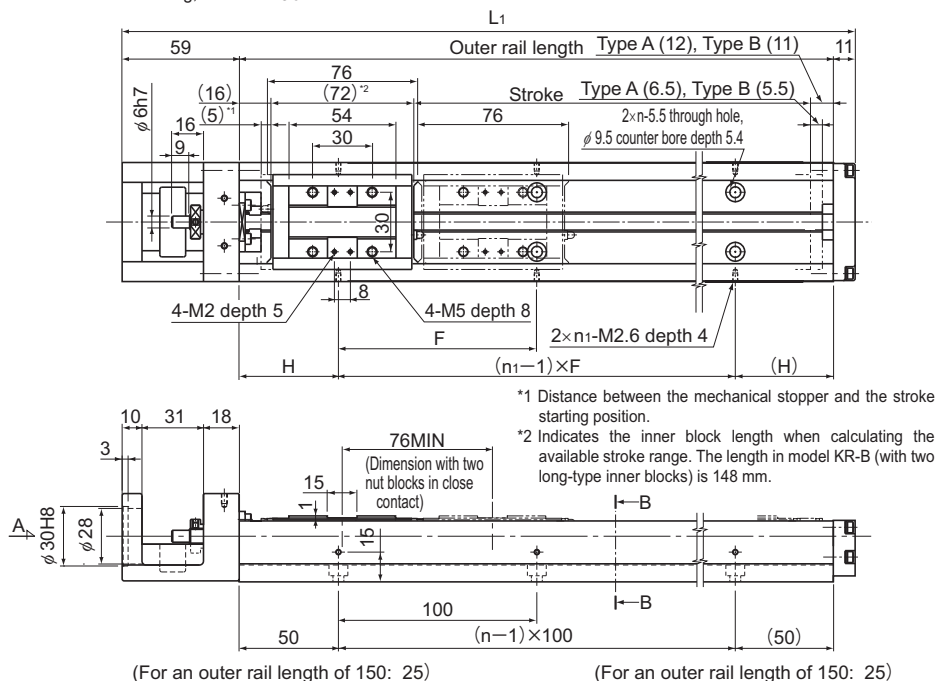


Model KR33 Standard Type

Model KR33□□A (with a Single Long Nut Block)

Model KR33□□B (with Two Long Nut Blocks)

For model number coding, see **A2-106**.



A arrow view

B-B cross section

Nipple orientation

With a single inner block

With two inner blocks

Stroke (mm) (stroke between mechanical stoppers)		Outer rail length (mm)	Overall length L_1 (mm)	H (mm)	F (mm)	n	n_1	Overall main unit mass (kg)	
Type A	Type B [*]							Type A	Type B
50(61.5)	—	150	220	25	100	2	2	1.9	—
100(111.5)	—	200	270	50	100	2	2	2.2	—
200(211.5)	125(135.5)	300	370	50	200	3	2	3	3.4
300(311.5)	225(235.5)	400	470	100	200	4	2	3.7	4.1
400(411.5)	325(335.5)	500	570	50	200	5	3	4.4	4.8
500(511.5)	425(435.5)	600	670	100	200	6	3	5.2	5.6
600(611.5)	525(535.5)	700	770	50	200	7	4	5.9	6.3

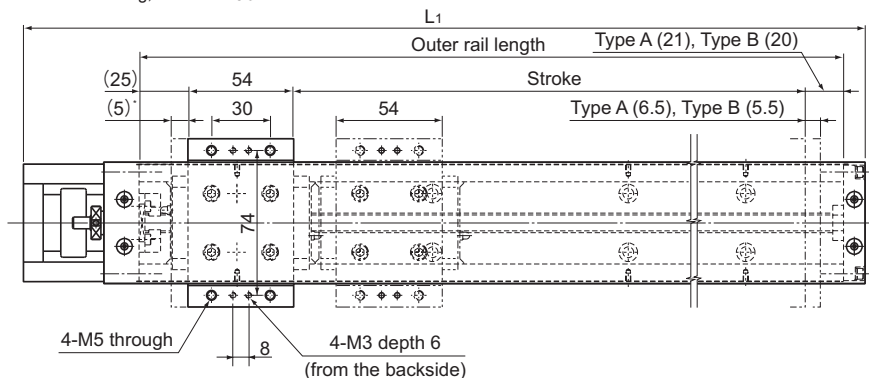
*Indicates a value when two inner blocks are in close contact with each other.

Model KR33 (with a Cover)

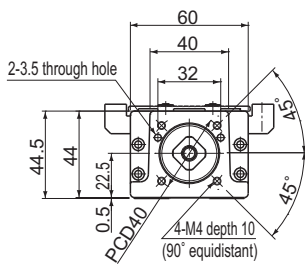
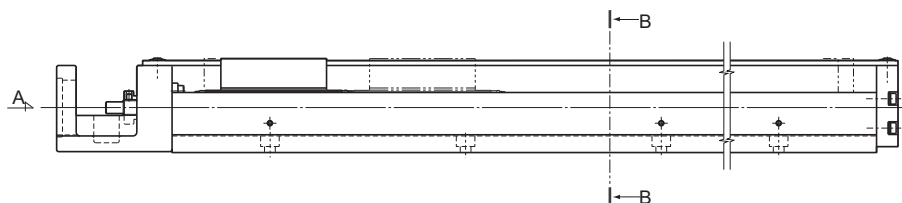
Model KR33□□A (with a Single Long Nut Block)

Model KR33□□B (with Two Long Nut Blocks)

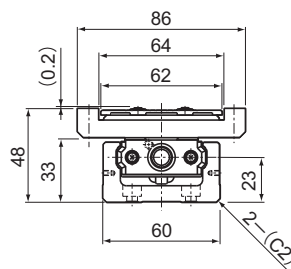
For model number coding, see **A2-106**.



* Distance between the mechanical stopper and the stroke starting position.



A arrow view



B-B cross section

Stroke (mm) (stroke between mechanical stoppers)		Outer rail length (mm)	Overall length L_1 (mm)	Overall main unit mass (kg)	
Type A	Type B*			Type A	Type B
50(61.5)	—	150	220	2.2	—
100(111.5)	—	200	270	2.6	—
200(211.5)	125(135.5)	300	370	3.3	3.9
300(311.5)	225(235.5)	400	470	4.1	4.7
400(411.5)	325(335.5)	500	570	4.9	5.5
500(511.5)	425(435.5)	600	670	5.6	6.2
600(611.5)	525(535.5)	700	770	6.4	7

*Indicates a value when two inner blocks are in close contact with each other.

Note) It must be noted that the cover-mounting bolt is 0.2 mm higher than the top face of the top table.