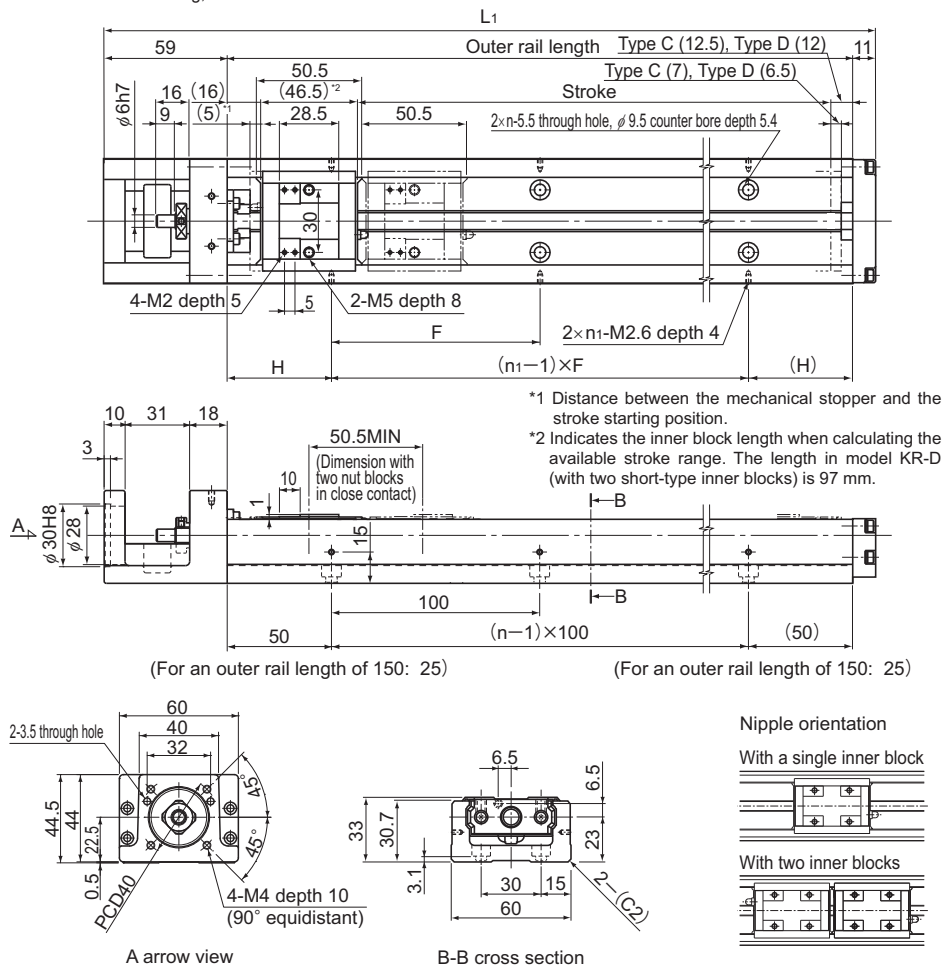


Model KR33 Standard Type

Model KR33□□C (with a Single Short Nut Block)

Model KR33□□D (with Two Short Nut Blocks)

For model number coding, see **A2-106**.



Stroke (mm) (stroke between mechanical stoppers)		Outer rail length (mm)	Overall length L ₁ (mm)	H (mm)	F (mm)	n	n ₁	Overall main unit mass (kg)	
Type C	Type D [*]							Type C	Type D
75(87)	25(36.5)	150	220	25	100	2	2	1.7	1.9
125(137)	75(86.5)	200	270	50	100	2	2	2	2.2
225(237)	175(186.5)	300	370	50	200	3	2	2.8	3
325(337)	275(286.5)	400	470	100	200	4	2	3.5	3.7
425(437)	375(386.5)	500	570	50	200	5	3	4.2	4.4
525(537)	475(486.5)	600	670	100	200	6	3	5	5.2
625(637)	575(586.5)	700	770	50	200	7	4	5.7	5.9

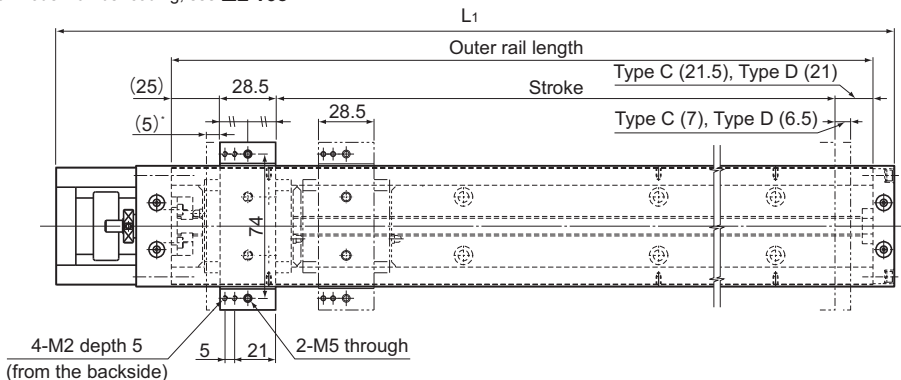
*Indicates a value when two inner blocks are in close contact with each other.

Model KR33 (with a Cover)

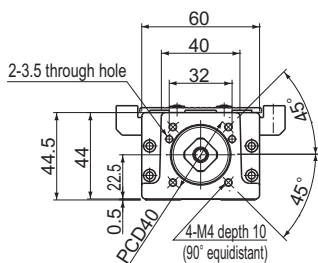
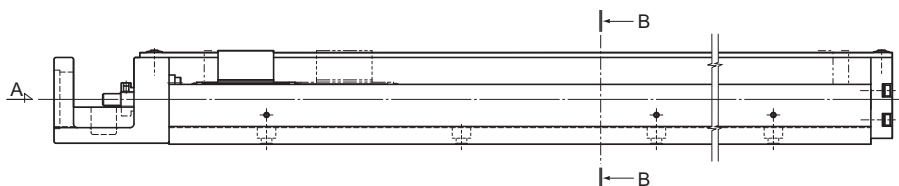
Model KR33□□C (with a Single Short Nut Block)

Model KR33□□D (with Two Short Nut Blocks)

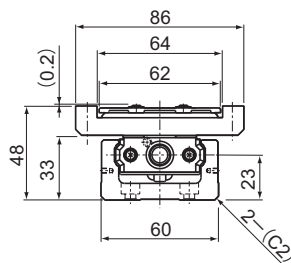
For model number coding, see **A2-106**.



* Distance between the mechanical stopper and the stroke starting position.



A arrow view



B-B cross section

Stroke (mm) (stroke between mechanical stoppers)		Outer rail length (mm)	Overall length L_1 (mm)	Overall main unit mass (kg)	
Type C	Type D			Type C	Type D
75(87)	25(36.5)	150	220	1.9	2.2
125(137)	75(86.5)	200	270	2.3	2.6
225(237)	175(186.5)	300	370	3	3.3
325(337)	275(286.5)	400	470	3.8	4.1
425(437)	375(386.5)	500	570	4.6	4.9
525(537)	475(486.5)	600	670	5.3	5.6
625(637)	575(586.5)	700	770	6.1	6.4

*Indicates a value when two inner blocks are in close contact with each other.

Note) It must be noted that the cover-mounting bolt is 0.2 mm higher than the top face of the top table.