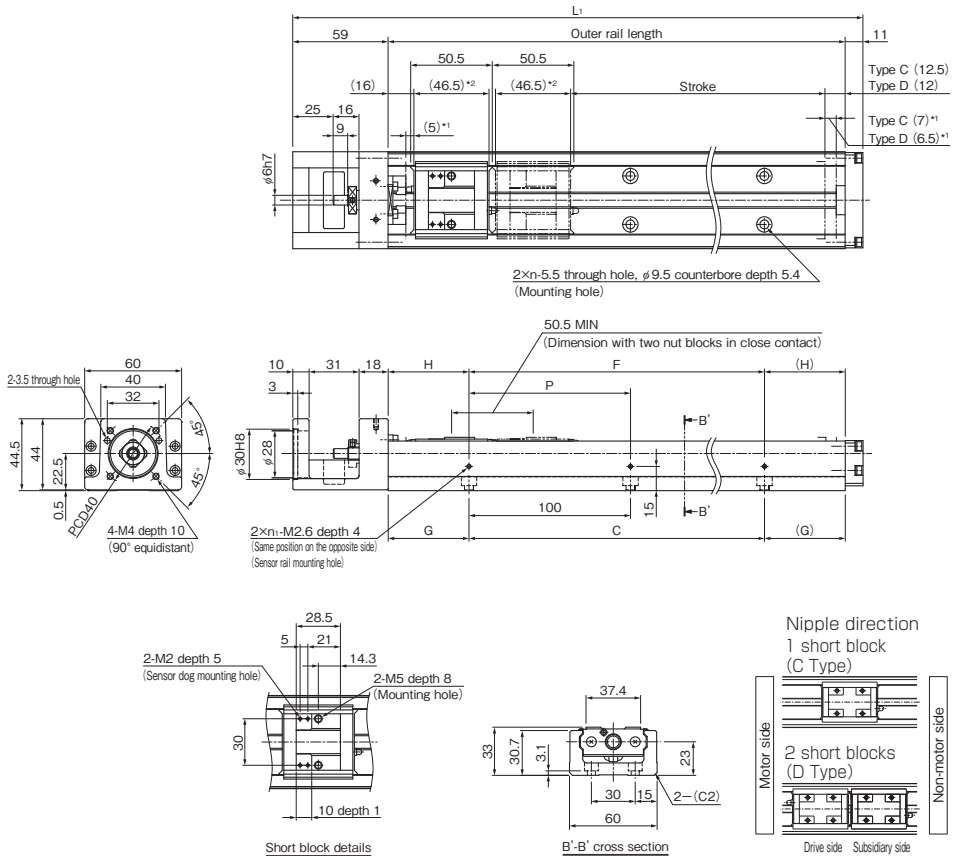


# KR33 Without Cover, Direct Motor Coupling

Model KR33□□C (with a Single Short Nut Block)

Model KR33□□D (with Two Short Nut Blocks)

For model number coding, see **A2-136**.



\*1 Distance between the mechanical stopper and the stroke starting position.

\*2 This indicates the short block length when calculating the possible stroke range.

It is 97.2 mm (total) for a KR33 with 2 short blocks in close contact with each other (D type, without QZ).

Stroke (mm) (stroke between mechanical stoppers)		Outer rail length (mm)	Overall length $L_1$ (mm)	C (mm)	G (mm)	P (mm)	F (mm)	H (mm)	n	$n_1$	Overall main unit mass (kg)	
Type C	Type D*										Type C	Type D
75 (87)	25 (36.5)	150	220	100	25	100	100	25	2	2	1.7	1.9
125 (137)	75 (86.5)	200	270	100	50	100	100	50	2	2	2	2.2
225 (237)	175 (186.5)	300	370	200	50	200	200	50	3	2	2.8	3
325 (337)	275 (286.5)	400	470	300	50	200	200	100	4	2	3.5	3.7
425 (437)	375 (386.5)	500	570	400	50	200	400	50	5	3	4.2	4.4
525 (537)	475 (486.5)	600	670	500	50	200	400	100	6	3	5	5.2
625 (637)	575 (586.5)	700	770	600	50	200	600	50	7	4	5.7	5.9

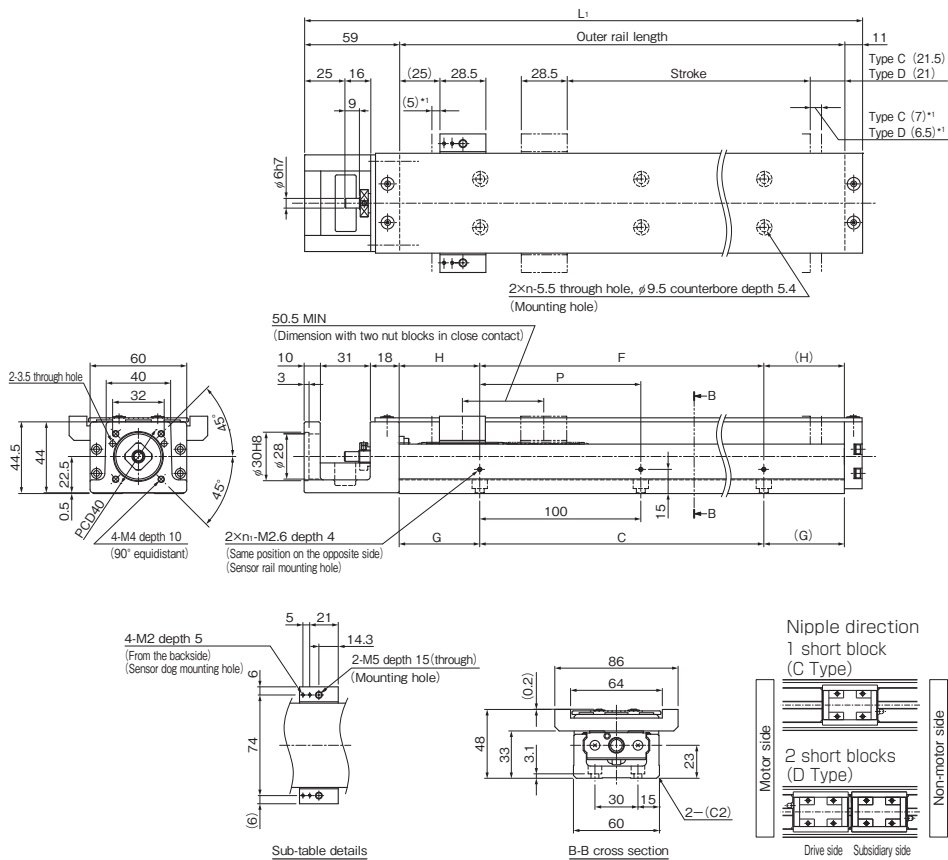
\*Indicates a value when two inner blocks are in close contact with each other.

# KR33 With Cover, Direct Motor Coupling

Model KR33□□C (with a Single Short Nut Block)

Model KR33□□D (with Two Short Nut Blocks)

For model number coding, see **A2-136**.



\*1 Distance between the mechanical stopper and the stroke starting position.

Stroke (mm) (stroke between mechanical stoppers)		Outer rail length (mm)	Overall length $L_1$ (mm)	C (mm)	G (mm)	P (mm)	F (mm)	H (mm)	n	$n_1$	Overall main unit mass (kg)	
Type C	Type D <sup>*</sup>										Type C	Type D
75 (87)	25 (36.5)	150	220	100	25	100	100	25	2	2	1.9	2.2
125 (137)	75 (86.5)	200	270	100	50	100	100	50	2	2	2.3	2.6
225 (237)	175 (186.5)	300	370	200	50	200	200	50	3	2	3	3.3
325 (337)	275 (286.5)	400	470	300	50	200	200	100	4	2	3.8	4.1
425 (437)	375 (386.5)	500	570	400	50	200	400	50	5	3	4.6	4.9
525 (537)	475 (486.5)	600	670	500	50	200	400	100	6	3	5.3	5.6
625 (637)	575 (586.5)	700	770	600	50	200	600	50	7	4	6.1	6.4

\*Indicates a value when two inner blocks are in close contact with each other.

Note) It must be noted that the cover-mounting bolt is 0.2 mm higher than the top face of the top table.