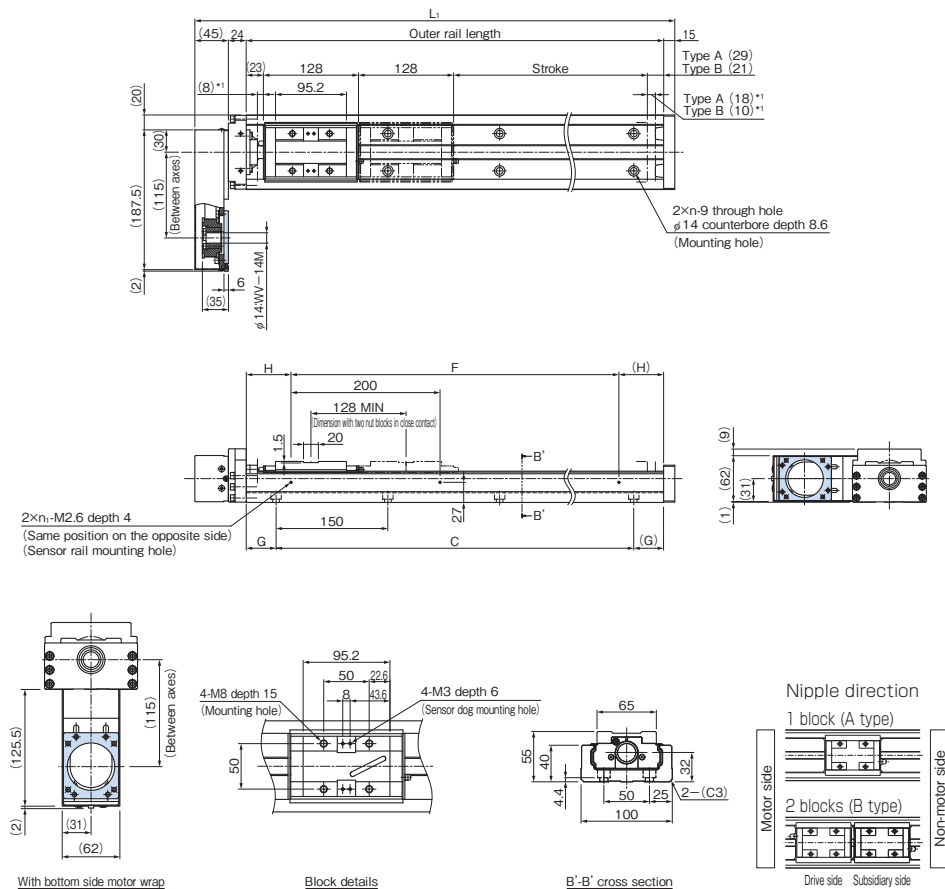


KR55 Without Cover, Motor Wrap Motor Flange Size, 60×60

Model KR5520A (with a Single Long Nut Block)

Model KR5520B (with Two Long Nut Blocks)

For model number coding, see **A2-136**.



*1 Distance between the mechanical stopper and the stroke starting position.

Stroke (mm) (stroke between mechanical stoppers)		Outer rail length (mm)	Overall length L ₁ (mm)	C (mm)	G (mm)	F (mm)	H (mm)	n	n ₁	Overall main unit mass (kg)	
Type A	Type B*									Type A	Type B
800 (826)	680 (698)	980	1064	900	40	800	90	7	5	21.1	22.9
900 (926)	780 (798)	1080	1164	1050	15	1000	40	8	6	22.8	24.6
1000 (1026)	880 (898)	1180	1264	1050	65	1000	90	8	6	24.5	26.3
1100 (1126)	980 (998)	1280	1364	1200	40	1200	40	9	7	26.3	28.1
1200 (1226)	1080 (1098)	1380	1464	1350	15	1200	90	10	7	28	29.8

*Indicates a value when two inner blocks are in close contact with each other.

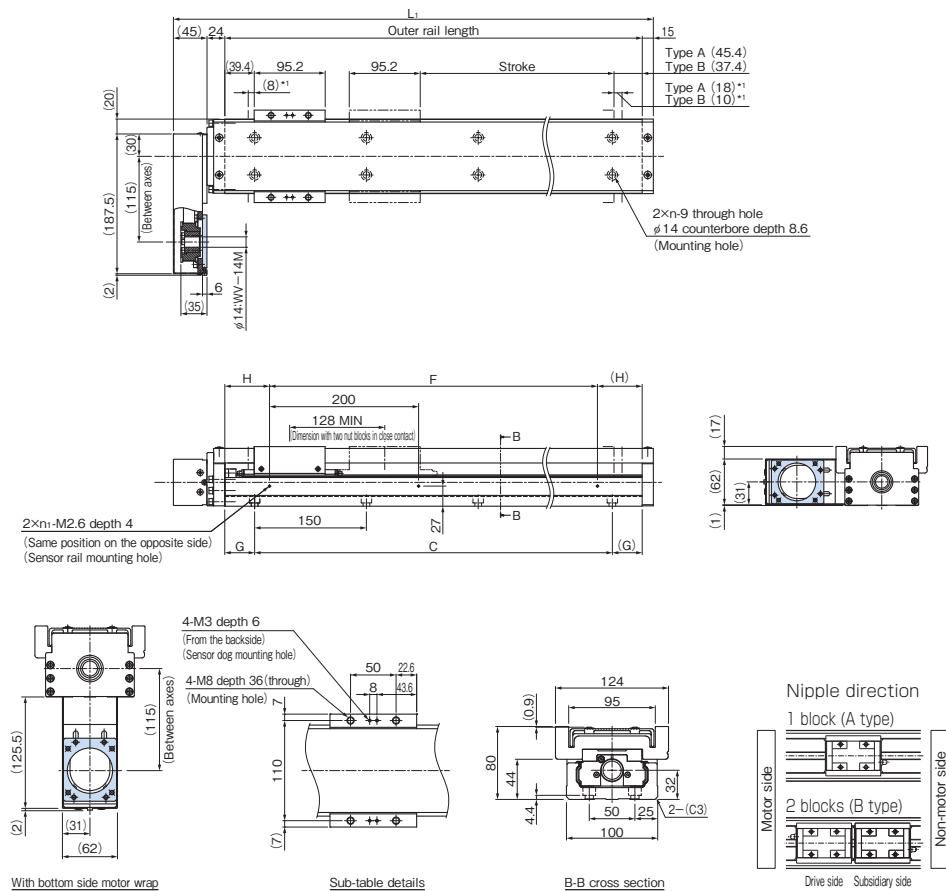
KR55 With Cover, Motor Wrap

Motor Flange Size, 60×60

Model KR5520A (with a Single Long Nut Block)

Model KR5520B (with Two Long Nut Blocks)

For model number coding, see **A2-136**.



^{*1} Distance between the mechanical stopper and the stroke starting position.

Stroke (mm) (stroke between mechanical stoppers)		Outer rail length (mm)	Overall length L_1 (mm)	C (mm)	G (mm)	F (mm)	H (mm)	n	n_1	Overall main unit mass (kg)	
Type A	Type B [*]									Type A	Type B
800 (826)	680 (698)	980	1064	900	40	800	90	7	5	25	28.7
900 (926)	780 (798)	1080	1164	1050	15	1000	40	8	6	26.8	30.5
1000 (1026)	880 (898)	1180	1264	1050	65	1000	90	8	6	28.6	32.3
1100 (1126)	980 (998)	1280	1364	1200	40	1200	40	9	7	30.5	34.2
1200 (1226)	1080 (1098)	1380	1464	1350	15	1200	90	10	7	32.3	36

^{*}Indicates a value when two inner blocks are in close contact with each other.

Options \Rightarrow **A2-193**

THK **A2-185**