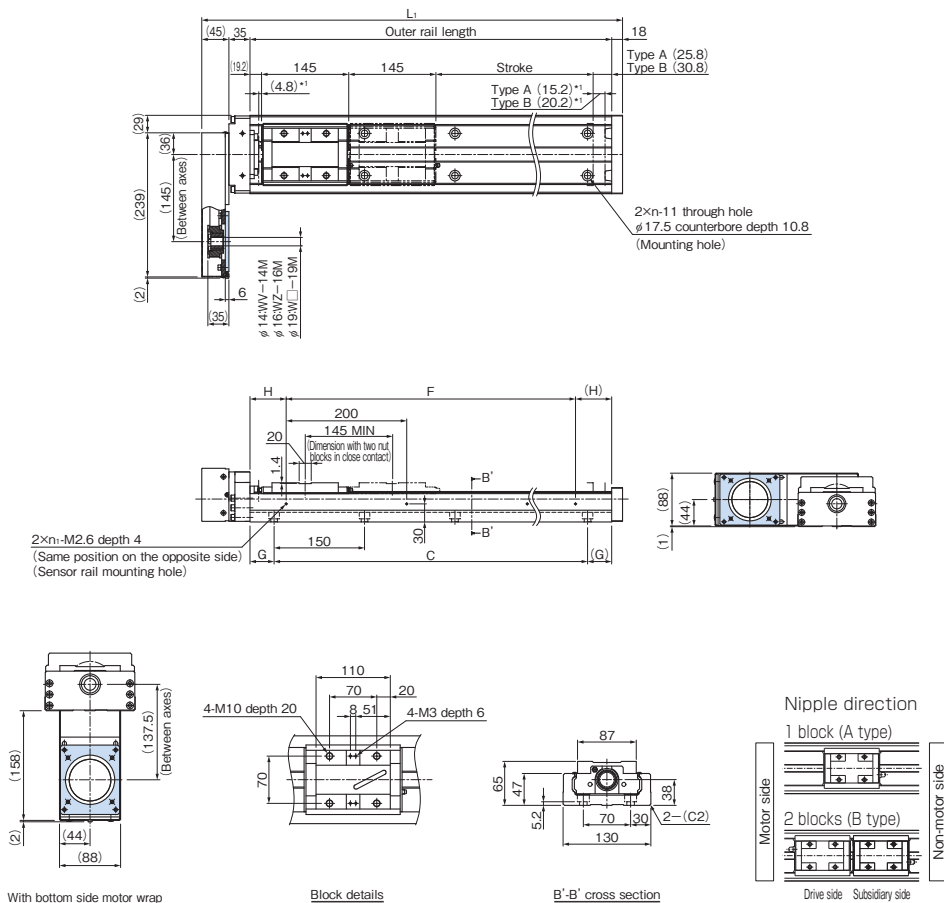


KR65 Without Cover, Motor Wrap

Model KR6525A (with a Single Long Nut Block)

Model KR6525B (with Two Long Nut Blocks)

For model number coding, see **A2-136**.



*1 Distance between the mechanical stopper and the stroke starting position.

Stroke (mm) (stroke between mechanical stoppers)		Outer rail length (mm)	Overall length L_1 (mm)	C (mm)	G (mm)	F (mm)	H (mm)	n	n_1	Overall main unit mass (kg)	
Type A	Type B*									Type A	Type B
790 (810)	640 (665)	980	1078	900	40	800	90	7	5	33.9	37.2
990 (1010)	840 (865)	1180	1278	1050	65	1000	90	8	6	39.3	42.6
1190 (1210)	1040 (1065)	1380	1478	1200	90	1200	90	9	7	44.7	48
1490 (1510)	1340 (1365)	1680	1778	1500	90	1600	40	11	9	52.7	56

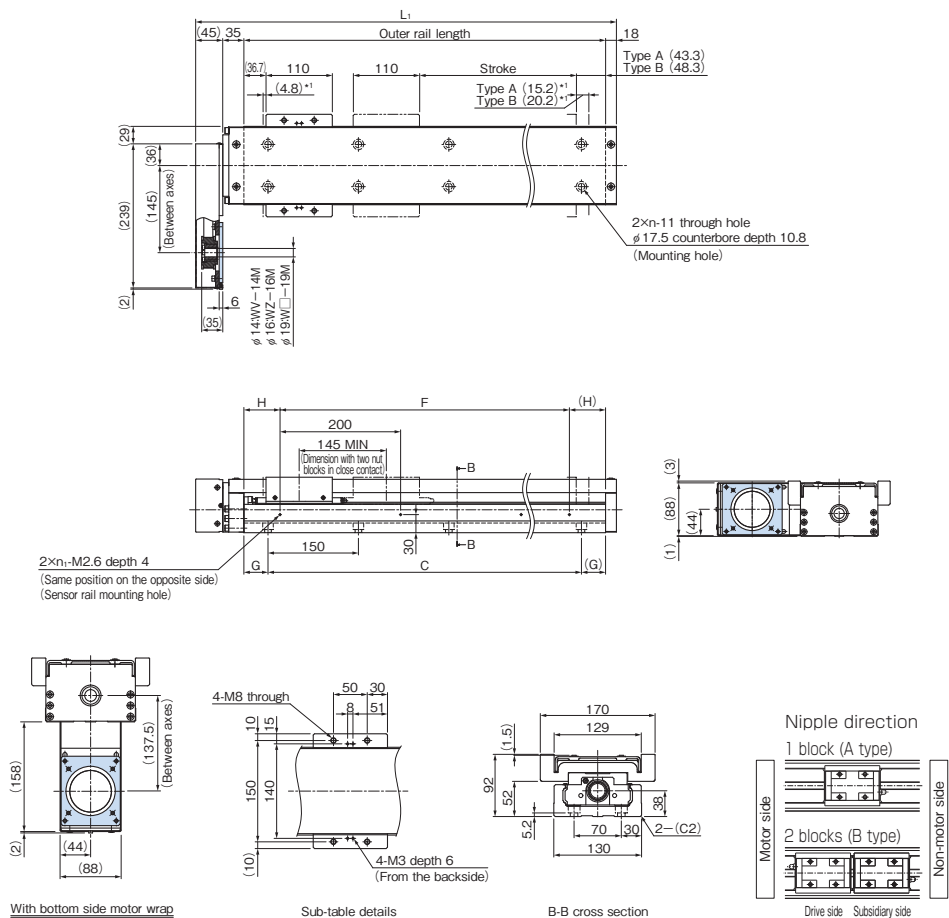
*Indicates a value when two inner blocks are in close contact with each other.

KR65 With Cover, Motor Wrap

Model KR6525A (with a Single Long Nut Block)

Model KR6525B (with Two Long Nut Blocks)

For model number coding, see **A2-136**.



*1 Distance between the mechanical stopper and the stroke starting position.

Stroke (mm) (stroke between mechanical stoppers)		Outer rail length (mm)	Overall length L ₁ (mm)	C (mm)	G (mm)	F (mm)	H (mm)	n	n ₁	Overall main unit mass (kg)	
Type A	Type B*									Type A	Type B
790 (810)	640 (665)	980	1078	900	40	800	90	7	5	40.3	46.9
990 (1010)	840 (865)	1180	1278	1050	65	1000	90	8	6	46	52.6
1190 (1210)	1040 (1065)	1380	1478	1200	90	1200	90	9	7	51.7	58.3
1490 (1510)	1340 (1365)	1680	1778	1500	90	1600	40	11	9	60.2	66.8

*Indicates a value when two inner blocks are in close contact with each other.

Options \Rightarrow **A2-193**

THK **A2-191**