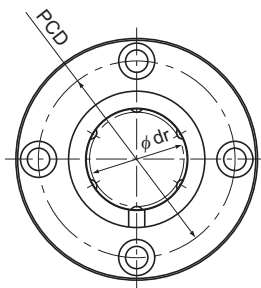


Model LMF



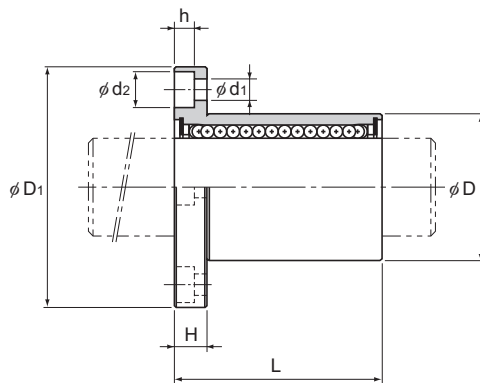
Model LMF

Model No.	Ball rows	Main dimensions							
		Inscribed bore diameter		Outer diameter		Length		Flange diameter	
		dr	Tolerance	D	Tolerance	L	Tolerance	D _f	Tolerance
LMF 6	4	6	0 -0.009	12	0 -0.011	19	0 -0.2	28	0 -0.2
LMF 8S	4	8		15		17		32	
LMF 8	4	8		15	24	32			
LMF 10	4	10		19	29	39			
LMF 12	4	12	21	0 -0.013	30	42			
LMF 13	4	13	23	32	43				
LMF 16	5	16	28	37	48				
LMF 20	5	20	32	42	54				
LMF 25	6	25	0 -0.010	40	0 -0.016	59	62		
LMF 30	6	30	45	64	74				
LMF 35	6	35	0	52	0	70	82		
LMF 40	6	40	-0.012	60	-0.019	80	96		
LMF 50	6	50	0	80	0	100	116		
LMF 60	6	60	0 -0.015	90	0 -0.022	110	134	0 -0.3	

Note) Since this model contains a synthetic resin retainer, do not use it at temperature exceeding 80°C.
If requiring a type equipped with a seal, indicate it when placing an order.

(Example) LMF25 UU

└────────── Seal attached on both ends of the nut



Unit: mm

	H	PCD	Mounting hole $d_1 \times d_2 \times h$	Flange perpendicularity	Eccentricity (max)	Radial clearance tolerance	Basic load rating		Mass g
				μm	μm	μm	C N	C_0 N	
	5	20	$3.4 \times 6.5 \times 3.3$	12	12	-5	206	265	23
	5	24	$3.4 \times 6.5 \times 3.3$	12	12	-5	176	225	29
	5	24	$3.4 \times 6.5 \times 3.3$	12	12	-5	265	402	33
	6	29	$4.5 \times 8 \times 4.4$	12	12	-5	373	549	59
	6	32	$4.5 \times 8 \times 4.4$	12	12	-5	412	598	68
	6	33	$4.5 \times 8 \times 4.4$	12	12	-7	510	775	80
	6	38	$4.5 \times 8 \times 4.4$	12	12	-7	775	1180	126
	8	43	$5.5 \times 9.2 \times 5.4$	15	15	-9	863	1370	160
	8	51	$5.5 \times 9.2 \times 5.4$	15	15	-9	980	1570	305
	10	60	$6.6 \times 11 \times 6.5$	15	15	-9	1570	2750	422
	10	67	$6.6 \times 11 \times 6.5$	20	20	-13	1670	3140	583
	13	78	$9 \times 14 \times 8.6$	20	20	-13	2160	4020	960
	13	98	$9 \times 14 \times 8.6$	20	20	-13	3820	7940	1920
	18	112	$11 \times 17.5 \times 10.8$	25	25	-13	4710	10000	2720

Note) If a lubrication hole is required, this can be indicated by appending "OH" to the end of the model number.
For further information, contact THK.