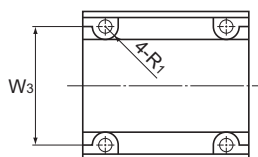


A arrow view Model SC35



A arrow view Model SC40 and SC60

Unit: mm

									Model No. of Linear Bushing to be combined	Basic load rating		Unit
	W ₂	W ₃	L ₁	T	R	R ₁	Inscribed bore diameter			C	C ₀	Mass
							dr	Tolerance				
	85	60	42	18	34	5	35	0 -0.012		LM35UU	1670	3140
	96	80	44	20	38	8	40		LM40UU	2160	4020	1600
	116	100	64	25	50	8	50		LM50UU	3820	7940	3350

Note) If a lubrication hole is required, this can be indicated by appending "OH" to the end of the model number.
For further information, contact THK.