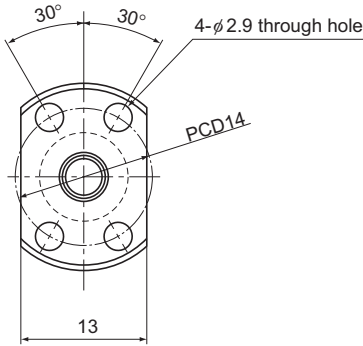


Positioning Ball Screw



X-X arrow view

Ball screw specifications			
Lead (mm)	1		
BCD (mm)	4.15		
Thread minor diameter (mm)	3.4		
Threading direction, No. of threaded grooves	Rightward, 1		
No. of circuits	1 turn × 3 rows		
Clearance symbol	G0	GT	G2
Axial clearance (mm)	0	0.005 or less	0.02 or less
Basic dynamic load rating C_a (kN)	0.29	0.29	0.29
Basic static load rating C_{0a} (kN)	0.42	0.42	0.42
Preload torque (N·m)	to 9.8×10^{-3}	—	—
Spacer ball	None	None	None
Rigidity value (N/μm)	35		
Circulation method	Deflector		

Unit: mm

	Runout of the screw shaft axis D	Runout of the nut circumference H	Flange mounting surface runout I	Runout of the thread groove surface J	Lead angle accuracy		Nut mass kg	Shaft mass kg/m	Permissible rotational speed min ⁻¹
					Representative travel distance error	Fluctuation			
	0.015	0.009	0.008	0.008	±0.008	0.008	0.01	0.07	3,500
	0.025	0.012	0.01	0.01	±0.018	0.018	0.01	0.07	3,500
	0.035	0.02	0.014	0.014	Travel distance: ±0.05/300		0.01	0.07	3,500
	0.02	0.009	0.008	0.008	±0.008	0.008	0.01	0.07	3,500
	0.025	0.012	0.01	0.01	±0.018	0.018	0.01	0.07	3,500
	0.035	0.02	0.014	0.014	Travel distance: ±0.05/300		0.01	0.07	3,500
	0.025	0.009	0.008	0.008	±0.008	0.008	0.01	0.07	3,500
	0.035	0.012	0.01	0.01	±0.018	0.018	0.01	0.07	3,500
	0.05	0.02	0.014	0.014	Travel distance: ±0.05/300		0.01	0.07	3,500