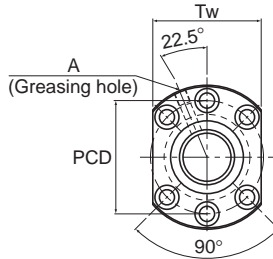
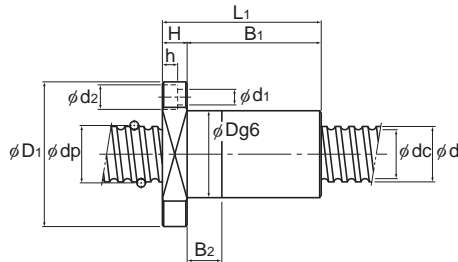


# DK No Preload

|          |       |
|----------|-------|
| DN value | 70000 |
|----------|-------|



| Model No. | Screw shaft outer diameter<br>d | Lead<br>Ph | Ball center-to-center diameter<br>dp | Thread minor diameter<br>dc | No. of loaded circuits<br>Rows X turns | Basic load rating |                       | Rigidity<br>K<br>N/μm |
|-----------|---------------------------------|------------|--------------------------------------|-----------------------------|--|-------------------|-----------------------|-----------------------|
|           |                                 |            |                                      |                             |  | Ca<br>kN          | C <sub>0a</sub><br>kN |                       |
| DK 3204-3 | 32                              | 4          | 32.5                                 | 30.1                        | 3 × 1                                  | 6.4               | 19.6                  | 290                   |
| DK 3204-4 | 32                              | 4          | 32.5                                 | 30.1                        | 4 × 1                                  | 8.2               | 26.1                  | 380                   |
| DK 3205-3 | 32                              | 5          | 32.75                                | 29.2                        | 3 × 1                                  | 11.1              | 30.2                  | 300                   |
| DK 3205-4 | 32                              | 5          | 32.75                                | 29.2                        | 4 × 1                                  | 14.2              | 40.3                  | 400                   |
| DK 3205-6 | 32                              | 5          | 32.75                                | 29.2                        | 6 × 1                                  | 20.1              | 60.4                  | 600                   |
| DK 3206-3 | 32                              | 6          | 33                                   | 28.4                        | 3 × 1                                  | 14.9              | 37.1                  | 310                   |
| DK 3206-4 | 32                              | 6          | 33                                   | 28.4                        | 4 × 1                                  | 19.1              | 49.5                  | 410                   |
| DK 3210-3 | 32                              | 10         | 33.75                                | 26.4                        | 3 × 1                                  | 25.7              | 52.2                  | 300                   |
| DK 3210-4 | 32                              | 10         | 33.75                                | 26.4                        | 4 × 1                                  | 33                | 69.7                  | 390                   |
| DK 3212-4 | 32                              | 12         | 33.75                                | 26.4                        | 4 × 1                                  | 34.2              | 73.9                  | 420                   |
| DK 3610-3 | 36                              | 10         | 37.75                                | 30.5                        | 3 × 1                                  | 28.8              | 63.8                  | 350                   |
| DK 3610-4 | 36                              | 10         | 37.75                                | 30.5                        | 4 × 1                                  | 36.8              | 85                    | 470                   |
| DK 4010-3 | 40                              | 10         | 41.75                                | 34.4                        | 3 × 1                                  | 29.8              | 69.3                  | 380                   |
| DK 4010-4 | 40                              | 10         | 41.75                                | 34.4                        | 4 × 1                                  | 38.1              | 92.4                  | 500                   |
| DK 4012-3 | 40                              | 12         | 41.75                                | 34.4                        | 3 × 1                                  | 30.6              | 72.3                  | 390                   |
| DK 4012-4 | 40                              | 12         | 41.75                                | 34.4                        | 4 × 1                                  | 39.2              | 96.4                  | 520                   |
| DK 4016-4 | 40                              | 16         | 41.75                                | 34.4                        | 4 × 1                                  | 39.1              | 96.8                  | 520                   |
| DK 4020-3 | 40                              | 20         | 41.75                                | 34.7                        | 3 × 1                                  | 29.4              | 69.3                  | 750                   |



Unit: mm

|  | Nut dimensions |                 |                |    |                |                |     |                                     |    |                         | Screw shaft inertial moment/mm <sup>3</sup> | Nut mass | Shaft mass |
|--|----------------|-----------------|----------------|----|----------------|----------------|-----|-------------------------------------|----|-------------------------|---|----------|------------|
|  | Outer diameter | Flange diameter | Overall length | H  | B <sub>1</sub> | B <sub>2</sub> | PCD | d <sub>1</sub> × d <sub>2</sub> × h | Tw | Greasing hole           |   |          |            |
|  | D              | D <sub>1</sub>  | L <sub>1</sub> | H  | B <sub>1</sub> | B <sub>2</sub> | PCD | d <sub>1</sub> × d <sub>2</sub> × h | Tw | A                       | kg·m <sup>2</sup> /mm                       | kg       | kg/m       |
|  | 45             | 76              | 44             | 11 | 33             | 10             | 63  | 6.6 × 11 × 6.5                      | 59 | M6                      | 8.08 × 10 <sup>-7</sup>                     | 0.44     | 5.86       |
|  | 45             | 76              | 48             | 11 | 37             | 10             | 63  | 6.6 × 11 × 6.5                      | 59 |                         | 8.08 × 10 <sup>-7</sup>                     | 0.47     | 5.86       |
|  | 46             | 76              | 47             | 12 | 35             | 10             | 63  | 6.6 × 11 × 6.5                      | 59 |                         | 8.08 × 10 <sup>-7</sup>                     | 0.5      | 5.67       |
|  | 46             | 76              | 52             | 12 | 40             | 10             | 63  | 6.6 × 11 × 6.5                      | 59 |                         | 8.08 × 10 <sup>-7</sup>                     | 0.53     | 5.67       |
|  | 46             | 76              | 62             | 12 | 50             | 10             | 63  | 6.6 × 11 × 6.5                      | 59 |                         | 8.08 × 10 <sup>-7</sup>                     | 0.6      | 5.67       |
|  | 48             | 76              | 53             | 12 | 41             | 10             | 63  | 6.6 × 11 × 6.5                      | 59 |                         | 8.08 × 10 <sup>-7</sup>                     | 0.58     | 6.31       |
|  | 48             | 76              | 61             | 12 | 49             | 10             | 63  | 6.6 × 11 × 6.5                      | 59 |                         | 8.08 × 10 <sup>-7</sup>                     | 0.65     | 6.31       |
|  | 54             | 87              | 80             | 15 | 65             | 15             | 69  | 9 × 14 × 8.5                        | 66 |                         | 8.08 × 10 <sup>-7</sup>                     | 1.22     | 4.98       |
|  | 54             | 87              | 90             | 15 | 75             | 20             | 69  | 9 × 14 × 8.5                        | 66 |                         | 8.08 × 10 <sup>-7</sup>                     | 1.34     | 4.98       |
|  | 54             | 87              | 98             | 15 | 83             | 25             | 69  | 9 × 14 × 8.5                        | 66 |                         | 8.08 × 10 <sup>-7</sup>                     | 1.43     | 5.2        |
|  | 58             | 98              | 82             | 18 | 64             | 15             | 77  | 11 × 17.5 × 11                      | 75 | 1.29 × 10 <sup>-6</sup> | 1.52  | 6.51     |            |
|  | 58             | 98              | 93             | 18 | 75             | 20             | 77  | 11 × 17.5 × 11                      | 75 | 1.29 × 10 <sup>-6</sup> | 1.66  | 6.51     |            |
|  | 62             | 104             | 83             | 18 | 65             | 15             | 82  | 11 × 17.5 × 11                      | 79 | Rc1/8<br>(PT1/8)        | 1.97 × 10 <sup>-6</sup>                     | 3.14     | 8.22       |
|  | 62             | 104             | 93             | 18 | 75             | 20             | 82  | 11 × 17.5 × 11                      | 79 |                         | 1.97 × 10 <sup>-6</sup>                     | 3.41     | 8.22       |
|  | 62             | 104             | 90             | 18 | 72             | 20             | 82  | 11 × 17.5 × 11                      | 79 |                         | 1.97 × 10 <sup>-6</sup>                     | 1.77     | 8.5        |
|  | 62             | 104             | 103            | 18 | 85             | 25             | 82  | 11 × 17.5 × 11                      | 79 |                         | 1.97 × 10 <sup>-6</sup>                     | 1.95     | 8.5        |
|  | 62             | 104             | 120            | 18 | 102            | 30             | 82  | 11 × 17.5 × 11                      | 79 |                         | 1.97 × 10 <sup>-6</sup>                     | 2.19     | 8.83       |
|  | 62             | 104             | 123            | 18 | 105            | 30             | 82  | 11 × 17.5 × 11                      | 79 |                         | 1.97 × 10 <sup>-6</sup>                     | 2.23     | 9.03       |

Note)The overall length of the nut will increase when equipping the QZ lubricating device. See **A15-318** for further details.