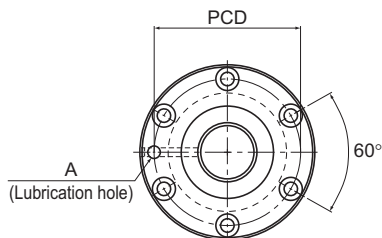


BNF No Preload

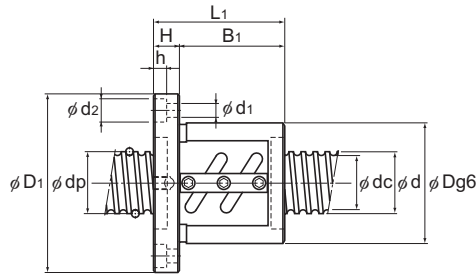
DN value	70000
----------	-------



Model No.	Screw shaft outer diameter d	Lead Ph	Ball center-to-center diameter dp	Thread minor diameter dc	No. of loaded circuits Rows X turns	Basic load rating		Rigidity K N/μm
						Ca kN	C _{0a} kN	
BNF 5510-2.5	55	10	56.75	49.5	1×2.5	33.4	97	490
BNF 5510-5	55	10	56.75	49.5	2×2.5	60.7	194	950
BNF 5510-7.5	55	10	56.75	49.5	3×2.5	85.9	291.1	1390
BNF 5512-2.5	55	12	57	49.2	1×2.5	39.3	108.8	500
BNF 5512-3	55	12	57	49.2	2×1.5	46	131.3	590
BNF 5512-3.5	55	12	57	49.2	1×3.5	52.4	152.9	680
BNF 5512-5	55	12	57	49.2	2×2.5	71.3	218.5	960
BNF 5512-7.5	55	12	57	49.2	3×2.5	100.9	327.3	1420
BNF 5516-2.5	55	16	57.7	47.9	1×2.5	76.1	201.9	650
BNF 5516-5	55	16	57.7	47.9	2×2.5	138.2	402.8	1280
BNF 5520-2.5	55	20	57.7	47.9	1×2.5	76	201.9	660
BNF 5520-5	55	20	57.7	47.9	2×2.5	138.2	403.8	1280
BNF 6310-2.5	63	10	64.75	57.7	1×2.5	35.4	111.7	550
BNF 6310-5	63	10	64.75	57.7	2×2.5	64.2	222.5	1050
BNF 6310-7.5	63	10	64.75	57.7	3×2.5	90.9	334.2	1550
BNF 6312A-2.5	63	12	65.25	56.3	1×2.5	48.1	139.2	560
BNF 6312A-5	63	12	65.25	56.3	2×2.5	87.4	278.3	1090
BNF 6316-5	63	16	65.7	55.9	2×2.5	147	462.6	1420
BNF 6320-2.5	63	20	65.7	55.9	1×2.5	81	231.3	740
BNF 6320-5	63	20	65.7	55.9	2×2.5	147	463.5	1420

Note) The model numbers in dimmed type indicate semi-standard types.
If desiring them, contact THK.

Positioning Ball Screw



Unit: mm

	Nut dimensions							Lubrication hole A	Screw shaft inertial moment/mm ² kg·m ² /mm	Nut mass kg	Shaft mass kg/m	Permissible rotational speed min ⁻¹
	Outer diameter D	Flange diameter D ₁	Overall length L ₁	H	B ₁	PCD	d ₁ × d ₂ × h					
	102	144	81	18	63	122	11 × 17.5 × 11	Rc1/8 (PT1/8)	7.05 × 10 ⁻⁶	4.19	16.43	1230
	102	144	111	18	93	122	11 × 17.5 × 11		7.05 × 10 ⁻⁶	5.36	16.43	1230
	102	144	141	18	123	122	11 × 17.5 × 11		7.05 × 10 ⁻⁶	6.54	16.43	1230
	105	147	93	18	75	125	11 × 17.5 × 11		7.05 × 10 ⁻⁶	5.01	16.29	1220
	105	147	107	18	89	125	11 × 17.5 × 11		7.05 × 10 ⁻⁶	5.6	16.29	1220
	105	147	105	18	87	125	11 × 17.5 × 11		7.05 × 10 ⁻⁶	5.52	16.29	1220
	105	147	129	18	111	125	11 × 17.5 × 11		7.05 × 10 ⁻⁶	6.54	16.29	1220
	105	147	165	18	147	125	11 × 17.5 × 11		7.05 × 10 ⁻⁶	8.07	16.29	1220
	110	158	116	25	91	133	14 × 20 × 13		7.05 × 10 ⁻⁶	7.4	15.46	1210
	110	158	164	25	139	133	14 × 20 × 13		7.05 × 10 ⁻⁶	9.73	15.46	1210
	112	158	127	28	99	134	14 × 20 × 13		7.05 × 10 ⁻⁶	8.4	16.1	1210
	112	158	187	28	159	134	14 × 20 × 13		7.05 × 10 ⁻⁶	11.45	16.1	1210
	108	154	77	22	55	130	14 × 20 × 13		1.21 × 10 ⁻⁵	4.57	21.93	1080
	108	154	107	22	85	130	14 × 20 × 13		1.21 × 10 ⁻⁵	5.77	21.93	1080
	108	154	137	22	115	130	14 × 20 × 13		1.21 × 10 ⁻⁵	6.98	21.93	1080
	115	161	87	22	65	137	14 × 20 × 13		1.21 × 10 ⁻⁵	5.8	21.14	1070
	115	161	123	22	101	137	14 × 20 × 13		1.21 × 10 ⁻⁵	7.56	21.14	1070
	122	184	160	24	136	152	18 × 26 × 17.5		1.21 × 10 ⁻⁵	11.82	20.85	1060
	122	180	127	28	99	150	18 × 26 × 17.5		1.21 × 10 ⁻⁵	10.1	21.57	1060
	122	180	187	28	159	150	18 × 26 × 17.5		1.21 × 10 ⁻⁵	13.58	21.57	1060

Note) The overall length of the nut will increase when equipping the QZ lubricating device. See **A15-344** for further details.