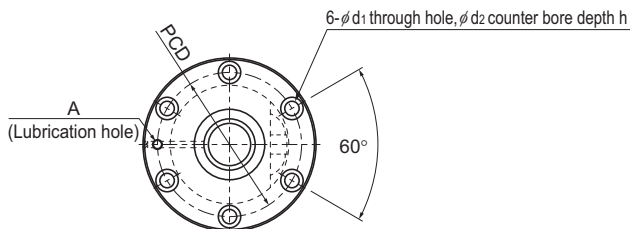


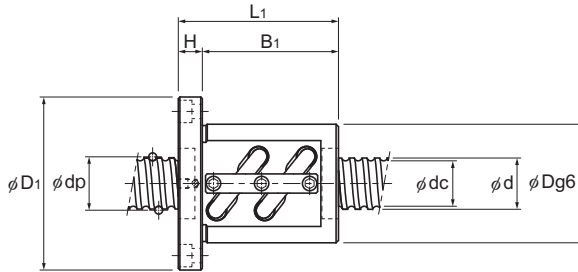
BNF-V Medium No Preload

DN value	130,000
----------	---------



Model No.	Screw shaft outer diameter d	Lead Ph	Ball center-to-center diameter dp	Thread minor diameter dc	No. of loaded circuits Rows X turns	Basic load rating		Rigidity K N/μm
						Ca kN	C _a a kN	
BNF 4510V-2.5	45	10	46.75	39.5	1×2.5	30.6	79.3	420
BNF 4510V-3	45	10	46.75	39.5	2×1.5	35.8	95.1	500
BNF 4510V-5	45	10	46.75	39.5	2×2.5	55.6	158.5	800
BNF 4510V-7.5	45	10	46.75	39.5	3×2.5	78.8	237.8	1,190
BNF 4512V-5	45	12	47	39.2	2×2.5	65.2	178.3	820
BNF 4520V-2.5	45	20	47	39.2	1×2.5	35.8	89.7	424
BNF 5010V-2.5	50	10	51.75	44.4	1×2.5	32.1	88.1	450
BNF 5010V-3.5	50	10	51.75	44.4	1×3.5	42.9	123.4	620
BNF 5010V-5	50	10	51.75	44.4	2×2.5	58.2	176.3	880
BNF 5010V-7.5	50	10	51.75	44.4	3×2.5	82.5	264.4	1,290
BNF 5012V-2.5	50	12	52.25	43.3	1×2.5	43.4	110.1	470
BNF 5012V-3.5	50	12	52.25	43.3	1×3.5	58	154.1	640
BNF 5012V-5	50	12	52.25	43.3	2×2.5	78.8	220.2	910
BNF 5016V-2.5	50	16	52.7	42.9	1×2.5	72.6	183.1	620
BNF 5016V-5	50	16	52.7	42.9	2×2.5	131.8	366.2	1,180
BNF 5020V-2.5	50	20	52.7	42.9	1×2.5	72.5	183.6	620

Positioning Ball Screw



Unit: mm

	Nut dimensions							Screw shaft inertial moment/mm ²	Nut mass	Shaft mass	Permissible rotational speed	
	Outer diameter	Flange diameter	Overall length	H	B ₁	PCD	d ₁ ×d ₂ ×h					Lubrication hole
	D	D ₁	L ₁	H	B ₁	PCD	d ₁ ×d ₂ ×h	A	kg·m ² /mm	kg	kg/m	min ⁻¹
	88	132	81	18	63	110	11×17.5×11	Rc1/8 (PT1/8)	3.16×10 ⁻⁶	3.43	11.36	2,780
	88	132	94	18	76	110	11×17.5×11		3.16×10 ⁻⁶	3.83	11.36	2,780
	88	132	111	18	93	110	11×17.5×11		3.16×10 ⁻⁶	4.35	11.36	2,780
	88	132	141	18	123	110	11×17.5×11		3.16×10 ⁻⁶	5.26	11.36	2,780
	90	130	119	18	101	110	11×17.5×11		3.16×10 ⁻⁶	4.74	11.32	2,760
	90	130	102	18	84	110	11×17.5×11		3.16×10 ⁻⁶	4.28	11.1	2,760
	93	135	73	18	55	113	11×17.5×11		4.82×10 ⁻⁶	3.33	14.16	2,510
	93	135	83	18	65	113	11×17.5×11		4.82×10 ⁻⁶	3.66	14.16	2,510
	93	135	103	18	85	113	11×17.5×11		4.82×10 ⁻⁶	4.31	14.16	2,510
	93	135	133	18	115	113	11×17.5×11		4.82×10 ⁻⁶	5.28	14.16	2,510
	100	146	87	22	65	122	14×20×13		4.82×10 ⁻⁶	4.57	13.82	2,480
	100	146	99	22	77	122	14×20×13		4.82×10 ⁻⁶	5.05	13.82	2,480
	100	146	123	22	101	122	14×20×13		4.82×10 ⁻⁶	6.02	13.82	2,480
	105	152	116	25	91	128	14×20×13		4.82×10 ⁻⁶	6.98	13.71	2,460
	105	152	164	25	139	128	14×20×13		4.82×10 ⁻⁶	9.18	13.71	2,460
	105	152	141	28	113	128	14×20×13		4.82×10 ⁻⁶	8.32	14.05	2,460

Note: The overall length of the nut will increase when equipping the QZ Lubricator. See **A15-366** for further details.