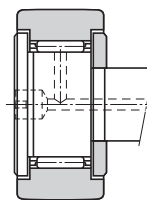
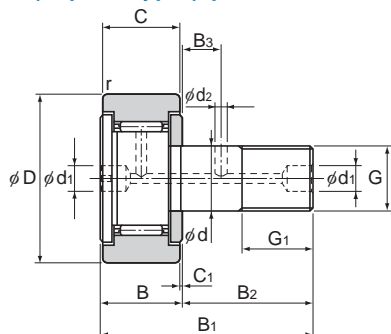


Model CF (Popular Type (Cylindrical Outer Ring)), Model CF-M (Stainless Steel Type) Model CF-R (Popular Type (Spherical Outer Ring)), Model CF-MR (Stainless Steel Type)



R250 (CF5)
R500 (CF6 to CF18)
R1000 (CF20 to CF30)

Model CF-R

Stud diameter d	Model No.	Main dimensions											Shoulder height f (Min.)	
		Outer diameter D	Outer ring width C	Threaded G	G ₁	B	Overall length B ₁	B ₂	B ₃	C ₁	d ₁	d ₂		r _{min}
5	CF 5	13	9	M5×0.8	7.5	10	23	13	—	0.5	3.1*	—	0.3	9.7
6	CF 6	16	11	M6×1	8	12	28	16	—	0.6	4*	—	0.3	11
8	CF 8	19	11	M8×1.25	10	12	32	20	—	0.6	4*	—	0.3	13
10	CF 10	22	12	M10×1.25	12	13	36	23	—	0.6	4*	—	0.3	15
10	CF 10-1	26	12	M10×1.25	12	13	36	23	—	0.6	4*	—	0.3	15
12	CF 12	30	14	M12×1.5	13	15	40	25	6	0.6	6	3	0.6	20
12	CF 12-1	32	14	M12×1.5	13	15	40	25	6	0.6	6	3	0.6	20
16	CF 16	35	18	M16×1.5	17	19.5	52	32.5	8	0.8	6	3	0.6	24
18	CF 18	40	20	M18×1.5	19	21.5	58	36.5	8	0.8	6	3	1	26
20	CF 20	52	24	M20×1.5	21	25.5	66	40.5	9	0.8	8	4	1	36
20	CF 20-1	47	24	M20×1.5	21	25.5	66	40.5	9	0.8	8	4	1	36
24	CF 24	62	29	M24×1.5	25	30.5	80	49.5	11	0.8	8	4	1	40
24	CF 24-1	72	29	M24×1.5	25	30.5	80	49.5	11	0.8	8	4	1	40
30	CF 30	80	35	M30×1.5	32	37	100	63	15	1	8	4	1	46
30	CF 30-1	85	35	M30×1.5	32	37	100	63	15	1	8	4	1	46
30	CF 30-2	90	35	M30×1.5	32	37	100	63	15	1	8	4	1	46

Note) The seal must be used at temperature of 80°C or below.
Those models marked with "*" have a greasing hole only on the head.

Model number coding

CF6 V M UU R -N

Model number

No symbol: With cage
V : Full-roller Type

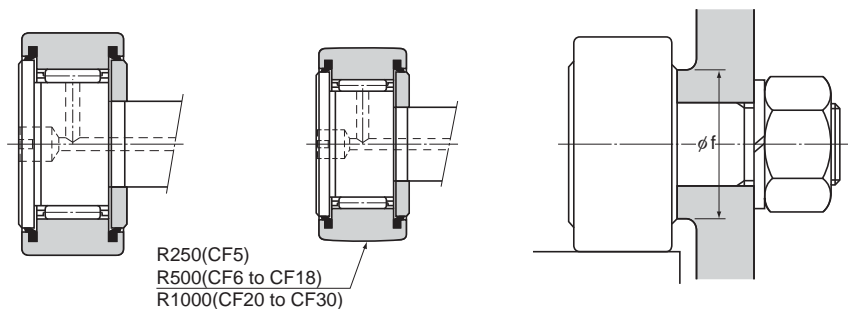
No symbol: Carbon steel
M : Stainless steel

no symbol: without seal
UU : With seal

No symbol: Standard accessories (see **A19-30**)
N : Dedicated grease nipple (see **A19-30**)

No Symbol : Cylindrical outer ring
R : Spherical outer ring

Note) Full-roller Type is applicable for Stud Diameter 6 to 30.



Model CF...UU

Model CF...UUR

Unit: mm

	Basic load rating				Maximum permissible load F_0 kN	Track load capacity		Rotational speed limit *		Mass	
	With cage		Full rollers			Cylindrical outer ring kN	Spherical outer ring kN	With cage min^{-1}	Full rollers min^{-1}	With cage g	Full rollers g
	C kN	C_0 kN	C kN	C_0 kN							
3.14	2.77	—	—	1.42	2.25	0.53	29000	—	10.5	—	
3.59	3.58	6.94	8.5	2.11	3.43	1.08	25000	11000	18.5	19	
4.17	4.65	8.13	11.2	4.73	4.02	1.37	20000	8700	28.5	29	
5.33	6.78	9.42	14.3	5.81	4.7	1.67	17000	7200	45	46	
5.33	6.78	9.42	14.3	5.81	5.49	2.06	17000	7200	60	61	
7.87	9.79	13.4	19.8	9.37	7.06	2.45	14000	5800	95	97	
7.87	9.79	13.4	19.8	9.37	7.45	2.74	14000	5800	105	107	
12	18.3	20.6	37.6	17.3	11.2	3.14	10000	4500	170	173	
14.7	25.2	25.2	51.3	26.1	14.4	3.72	8500	3800	250	255	
20.7	34.8	33.2	64.8	32.1	23.2	8.23	7000	3400	460	465	
20.7	34.8	33.2	64.8	32.1	21	7.15	7000	3400	385	390	
30.6	53.2	46.7	92.9	49.5	34.2	10.5	6500	2900	815	820	
30.6	53.2	46.7	92.9	49.5	39.8	12.9	6500	2900	1140	1140	
45.4	87.6	67.6	145	73.7	52.6	14.9	5000	2300	1870	1870	
45.4	87.6	67.6	145	73.7	56	16.1	5000	2300	2030	2030	
45.4	87.6	67.6	145	73.7	59.3	17.3	5000	2300	2220	2220	

Note) The rotation speed limit value in the table (*) applies to models that have no seal and use grease lubrication. With those models using oil lubrication, up to 130% of this value is permitted. With those attached with seals, up to 70% of this value is permitted.