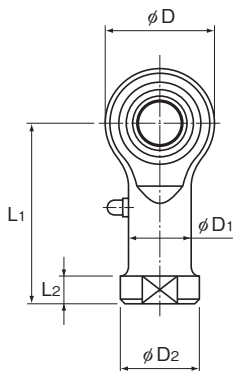


Model PHS (Female Threading Type)



Model No.	Outer dimensions			Threaded S ₁ JIS Class 2	Holder Dimensions			
	Length L	Diameter D	Width B ₁ 0 -0.1		W 0 -0.2	D ₁	D ₂	B ±0.1
PHS 5	35	16	8	M5×0.8	9	9	11	6
PHS 6	39	18	9	M6×1	11	10	13	6.75
PHS 8	47	22	12	M8×1.25	14	12.5	16	9
PHS 10	56	26	14	M10×1.5	17	15	19	10.5
PHS 12	65	30	16	M12×1.75	19	17.5	22	12
PHS 14	74	34	19	M14×2	22	20	25	13.5
PHS 16	83	38	21	M16×2	22	22	27	15
PHS 18	92	42	23	M18×1.5	27	25	31	16.5
PHS 20	100	46	25	M20×1.5	30	27.5	34	18
PHS 22	109	50	28	M22×1.5	32	30	37	20
PHS 25	124	60	31	M24×2	36	33.5	42	22
PHS 30	145	70	37	M30×2	41	40	50	25

[Material]

Holder : S35C (Chromate treatment)

Spherical inner ring: SUJ2, 58 HRC or higher

(Hard chrome plated except for the inner surface of the inner ring)

Bush : copper alloy

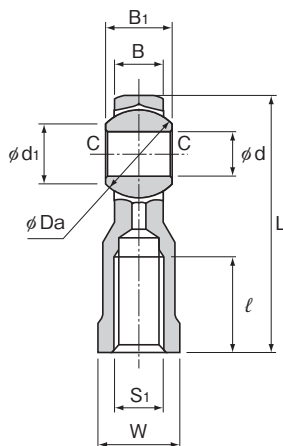
[Fitting with the Shaft]

Condition	Dimensional tolerance of the shaft
Normal load	h7
Indeterminate load	p6

Model number coding

PHS10 L

Model number | Left-hand thread



Unit: mm

				Grease nipple	Spherical inner ring dimensions				Permissible tilt angles			Static applied load Radial	Mass
L ₁	L ₂	ℓ	d		Ball diameter Da mm (inch)	d ₁	C	α ₁ °	α ₂ °	α ₃ °	C _s	g	
			H7								N		
27	4	14	PB107	5	11.112(⁷ / ₁₆)	7.7	0.3	8	13	30	5590	16.5	
30	5	14		6	12.7(¹ / ₂)	9	0.3	8	13	30	6860	25	
36	5	17		8	15.875(⁵ / ₈)	10.4	0.5	8	14	25	9800	43	
43	6.5	21		10	19.05(³ / ₄)	12.9	0.5	8	14	25	13200	72	
50	6.5	24		12	22.225(⁷ / ₈)	15.4	0.5	8	13	25	16700	107	
57	8	27		14	25.4(1)	16.9	0.7	10	16	24	20600	160	
64	8	33		16	28.575(1 ¹ / ₈)	19.4	0.7	9	15	24	25000	210	
71	10	36		18	31.75(1 ¹ / ₄)	21.9	0.7	9	15	24	29400	295	
77	10	40		20	34.925(1 ³ / ₈)	24.4	0.7	9	15	24	34300	380	
84	12	43		22	38.1(1 ¹ / ₂)	25.8	0.7	10	15	23	41200	490	
94	12	48		A-M6F	25	42.862(1 ¹ / ₈)	29.6	0.8	9	15	23	72500	750
110	15	56			30	50.8(2)	34.8	0.8	10	17	23	92200	1130

[Clearance]

Unit: mm

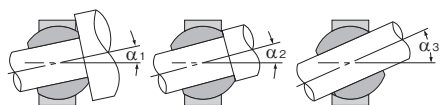
Radial clearance	0.035 or less
Axial clearance	0.1 or less

[Lubrication]

Apply lubricant before using the product. The holder has a greasing hole and an oil groove; they allow grease to be replenished through the grease nipple as necessary.

[Identification of Left-hand Thread]

If the female threading is left-hand, symbol "L" is added. The actual product is marked with symbol "L" on the holder.



Permissible Tilt Angles