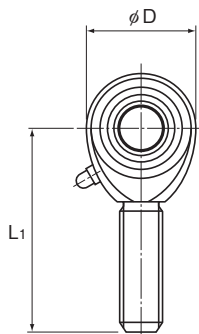


## Model POS (Male Thread Type)



Model No.	Outer dimensions			Threaded $S_1$ JIS Class 2	Holder Dimensions	
	Length L	Diameter D	Width $B_1$ 0 -0.1		B $\pm 0.1$	$L_1$
POS 5	41	16	8	M5×0.8	6	33
POS 6	45	18	9	M6×1	6.75	36
POS 8	53	22	12	M8×1.25	9	42
POS 10	61	26	14	M10×1.5	10.5	48
POS 12	69	30	16	M12×1.75	12	54
POS 14	77	34	19	M14×2	13.5	60
POS 16	85	38	21	M16×2	15	66
POS 18	93	42	23	M18×1.5	16.5	72
POS 20	101	46	25	M20×1.5	18	78
POS 22	109	50	28	M22×1.5	20	84
POS 25	124	60	31	M24×2	22	94
POS 30	145	70	37	M30×2	25	110

### [Material]

Holder : S35C (Chromate treatment)

Spherical inner ring: SUJ2, 58 HRC or higher

( Hard chrome plated except for the inner surface of the inner ring )

Bush : copper alloy

### [Fitting with the Shaft]

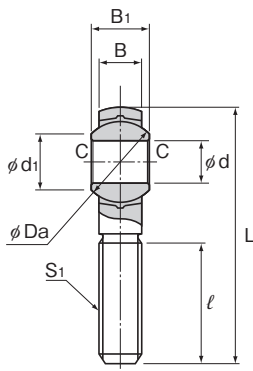
Condition	Dimensional tolerance of the shaft
Normal load	h7
Indeterminate load	p6

### Model number coding

**POS10 L**

Model number |

Left-hand thread



Unit: mm

	$l$	Grease nipple (Greasing hole)	Spherical inner ring dimensions				Permissible tilt angles			Static applied load Radial	Mass
			d H7	Ball diameter Da mm (inch)	d <sub>1</sub>	C	$\alpha_1^\circ$	$\alpha_2^\circ$	$\alpha_3^\circ$	C <sub>s</sub> N	g
	20	(φ1.5)	5	11.112( <sup>7</sup> / <sub>16</sub> )	7.7	0.3	8	13	30	3430	12.5
	22		6	12.7( <sup>1</sup> / <sub>2</sub> )	9	0.3	8	13	30	4900	19
	25	PB107	8	15.875( <sup>5</sup> / <sub>8</sub> )	10.4	0.5	8	14	25	6860	32
	29		10	19.05( <sup>3</sup> / <sub>4</sub> )	12.9	0.5	8	14	25	10800	54
	33		12	22.225( <sup>7</sup> / <sub>8</sub> )	15.4	0.5	8	13	25	16700	85
	36		14	25.4(1)	16.9	0.7	10	16	24	20600	126
	40		16	28.575( <sup>1</sup> / <sub>8</sub> )	19.4	0.7	9	15	24	25000	185
	44		18	31.75( <sup>1</sup> / <sub>4</sub> )	21.9	0.7	9	15	24	29400	260
	47		20	34.925( <sup>1</sup> / <sub>2</sub> )	24.4	0.7	9	15	24	34300	340
	51		22	38.1( <sup>1</sup> / <sub>2</sub> )	25.8	0.7	10	15	23	41200	435
	57	A-M6F	25	42.862( <sup>1</sup> / <sub>8</sub> )	29.6	0.8	9	15	23	72500	650
	66		30	50.8(2)	34.8	0.8	10	17	23	92200	1070

**[Clearance]**

Unit: mm

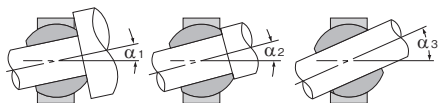
Radial clearance	0.035 or less
Axial clearance	0.1 or less

**[Lubrication]**

Apply lubricant before using the product. The holder has a greasing hole and an oil groove; they allow grease to be replenished through the grease nipple as necessary. To lubricate the product, replenish grease from the holder greasing hole for models POS5 and 6, or from the grease nipple for other models.

**[Identification of Left-hand Thread]**

If the male thread is left-hand, symbol "L" is added. The actual product is marked with symbol "L" on the holder.



Permissible Tilt Angles