



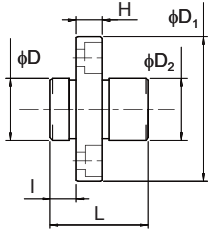
Linear Bushing Series

Additional Models

Fitted Flanged Short Type, Model LMI



Unit: mm



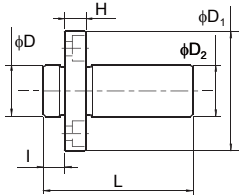
Model No.	Rows of Balls	Inscribed bore diameter		Outer diameter		Overall length		Flange diameter		Length		D2	H	d1	d2	h	Eccentricity (Maximum) μm	C N	C0 N
		dr	Tolerance	D	Tolerance	L	Tolerance	D1	Tolerance	l	Tolerance								
LMI * 6	4	6	0	12	0	19	± 0.3	28	0	5	± 0.2	12	5	3.4	6	3.3	12	206	265
LMI * 8		8		15	-0.011	24		32				15						265	402
LMI * 10		10		19	29	39		19				373						549	
LMI * 12		12		21	0	30		42				21						412	598
LMI * 13	5	13	-0.013	23	-0.013	32	± 0.3	43	-0.2	6	± 0.2	23	6	4.5	7.5	4.4	12	510	775
LMI * 16		16		28	37	48		28				775						1180	
LMI * 20		20		32	0	42		54				32						863	1370
LMI * 25	6	25	-0.010	40	-0.016	59	± 0.3	62	-0.2	8	± 0.2	40	8	5.5	9	5.4	15	980	1570

Flange type (F, K, H) is inserted in place of the asterisk (*). Example: LMIF6
If a seal is required, write "UU" at the end of the model number. Example: LMIF6UU

Long Type, Model LMI-L



Unit: mm



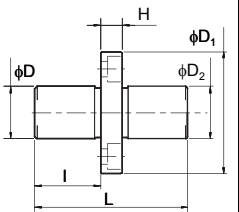
Model No.	Rows of Balls	Inscribed bore diameter		Outer diameter		Overall length		Flange diameter		Length		D2	H	d1	d2	h	Eccentricity (Maximum) μm	C N	C0 N
		dr	Tolerance	D	Tolerance	L	Tolerance	D1	Tolerance	l	Tolerance								
LMI * 6L	4	6	0	12	0	35	± 0.3	28	0	5	± 0.2	12	5	3.4	6	3.3	15	324	529
LMI * 8L		8		15	-0.013	45		32				15						431	784
LMI * 10L		10		19	55	39		19				588						1100	
LMI * 12L		12		21	0	57		42				21						657	1200
LMI * 13L	5	13	-0.016	23	-0.016	61	± 0.3	43	-0.2	6	± 0.2	23	6	4.5	7.5	4.4	15	814	1570
LMI * 16L		16		28	70	48		28				1230						2350	
LMI * 20L		20		32	0	80		54				32						1400	2750
LMI * 25L	6	25	-0.012	40	-0.019	112	± 0.3	62	-0.2	8	± 0.2	40	8	5.5	9	5.4	20	1560	3140

Flange type (F, K, H) is inserted in place of the asterisk (*). Example: LMIF6L
If a seal is required, write "UU" at the end of the model number. Example: LMIF6LUU

Center Flanged Model LMC-L



Unit: mm



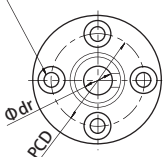
Model No.	Rows of Balls	Inscribed bore diameter		Outer diameter		Overall length		Flange diameter		Length		D2	H	d1	d2	h	Eccentricity (Maximum) μm	C N	C0 N
		dr	Tolerance	D	Tolerance	L	Tolerance	D1	Tolerance	l	Tolerance								
LMC * 6L	4	6	0	12	0	35	± 0.3	28	0	5	± 0.2	12	5	3.4	6	3.3	15	324	529
LMC * 8L		8		15	-0.013	45		32				15						431	784
LMC * 10L		10		19	55	39		19				588						1100	
LMC * 12L		12		21	0	57		42				21						657	1200
LMC * 13L	5	13	-0.016	23	-0.016	61	± 0.3	43	-0.2	6	± 0.2	23	6	4.5	7.5	4.4	15	814	1570
LMC * 16L		16		28	70	48		28				1230						2350	
LMC * 20L		20		32	0	80		54				32						1400	2750
LMC * 25L	6	25	-0.012	40	-0.019	112	± 0.3	62	-0.2	8	± 0.2	40	8	5.5	9	5.4	20	1560	3140

Flange type (F, K, H) is inserted in place of the asterisk (*). Example: LMCF6L
If a seal is required, write "UU" at the end of the model number. Example: LMCF6LUU

Flange Types

F Type

4- ϕd , drilled through d_2 counter bore depth h



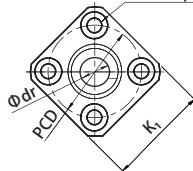
Unit: mm

Inscribed bore diameter dr	PCD
6	20
8	24
10	29
12	32
13	33
16	38
20	43
25	51

Model LMIF
Model LMIF-L
Model LMCF-L

K Type

4- ϕd , drilled through d_2 counter bore depth h



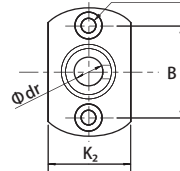
Unit: mm

Inscribed bore diameter dr	K1	PCD
6	22	20
8	25	24
10	30	29
12	32	32
13	34	33
16	37	38
20	42	43
25	50	51

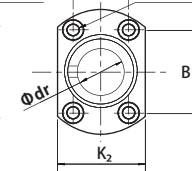
Model LMIK
Model LMIK-L
Model LMCK-L

H Type

2- ϕd , drilled through d_2 counter bore depth h



4- ϕd , drilled through d_2 counter bore depth h



Unit: mm

Inscribed bore diameter dr	K2	B	C
6	18	20	-
8	21	24	-
10	25	29	-
12	27	32	-
13	29	33	-
16	34	31	22
20	38	36	24
25	46	40	32

Model LMIH13 or lower
Model LMIH13L or lower
Model LMCH13L or lower
Model LMIH16 or higher
Model LMIH16L or higher
Model LMCH16L or higher

Line Up

Linear Bushings [Additional Models]



Linear Bushings



LM Case Units



LM Shaft End Support



Standard LM Shafts Additional Machining Is Available



Guide Ball Bushing



THK CO., LTD.

HEAD OFFICE 3-11-6, NISHI-GOTANDA, SHINAGAWA-KU, TOKYO 141-8503 JAPAN
INTERNATIONAL SALES DEPARTMENT PHONE:+81-3-5434-0351 FAX:+81-3-5434-0353

Global site : <http://www.thk.com/>

EUROPE

THK GmbH
● EUROPEAN HEADQUARTERS
Phone:+49-2102-7425-555 Fax:+49-2102-7425-556
● DÜSSELDORF OFFICE
Phone:+49-2102-7425-0 Fax:+49-2102-7425-299
● STUTTGART OFFICE
Phone:+49-7141-4988-500 Fax:+49-7141-4988-888
● U.K. OFFICE
Phone:+44-1384-47-1550 Fax:+44-1384-47-1551
● ITALY OFFICE
Phone:+39-02-9901-1801 Fax:+39-02-9901-1881
● SWEDEN OFFICE
Phone:+46-8-445-7630 Fax:+46-8-445-7639
● AUSTRIA OFFICE
Phone:+43-7229-51400 Fax:+43-7229-51400-79
● SPAIN OFFICE
Phone:+34-93-652-5740 Fax:+34-93-652-5746
● TURKEY OFFICE
Phone:+90-216-362-4050 Fax:+90-216-569-7150
● PRAGUE OFFICE
Phone:+420-2-41025-100 Fax:+420-2-41025-199
● MOSCOW OFFICE
Phone:+7-495-649-80-47 Fax:+7-495-649-80-44
THK Europe B.V.
● EINDHOVEN OFFICE
Phone:+31-040-290-9500 Fax:+31-040-290-9599
THK France S.A.S.
Phone:+33-4-3749-1400 Fax:+33-4-3749-1401

NORTH AMERICA

THK America, Inc.
● HEADQUARTERS
Phone:+1-847-310-1111 Fax:+1-847-310-1271
● CHICAGO OFFICE
Phone:+1-847-310-1111 Fax:+1-847-310-1182
● NORTH EAST OFFICE
Phone:+1-631-244-1565 Fax:+1-631-244-1565
● ATLANTA OFFICE
Phone:+1-770-840-7990 Fax:+1-770-840-7897
● LOS ANGELES OFFICE
Phone:+1-949-955-3145 Fax:+1-949-955-3149
● SAN FRANCISCO OFFICE
Phone:+1-925-455-8948 Fax:+1-925-455-8965
● DETROIT OFFICE
Phone:+1-248-858-9330 Fax:+1-248-858-9455
● TORONTO OFFICE
Phone:+1-905-820-7800 Fax:+1-905-820-7811
SOUTH AMERICA
THK BRAZIL INDUSTRIA E COMERCIO LTDA.
Phone:+55-11-3767-0100 Fax:+55-11-3767-0101
CHINA
THK (CHINA) CO., LTD.
● HEADQUARTERS
Phone:+86-411-8733-7111 Fax:+86-411-8733-7000
● SHANGHAI OFFICE
Phone:+86-21-6219-3000 Fax:+86-21-6219-9890
● BEIJING OFFICE
Phone:+86-10-8441-7277 Fax:+86-10-6590-3557

● CHENGDU OFFICE

Phone:+86-28-8526-8025 Fax:+86-28-8525-6357
● GUANGZHOU OFFICE
Phone:+86-20-8523-8418 Fax:+86-20-3801-0456
● SHENZHEN OFFICE
Phone:+86-755-2642-9587 Fax:+86-755-2642-9604
● XIAN OFFICE
Phone:+86-29-8834-1712 Fax:+86-29-8834-1710
THK (SHANGHAI) CO., LTD.
Phone:+86-21-6275-5280 Fax:+86-21-6219-9890
TAIWAN
THK TAIWAN CO., LTD.
● TAIPEI HEAD OFFICE
Phone:+886-2-2888-3818 Fax:+886-2-2888-3819
● TAICHUNG OFFICE
Phone:+886-4-2359-1505 Fax:+886-4-2359-1506
● TAINAN OFFICE
Phone:+886-6-289-7668 Fax:+886-6-289-7669
KOREA
SEOUL REPRESENTATIVE OFFICE
Phone:+82-2-3468-4351 Fax:+82-2-3468-4353
SINGAPORE
THK LM SYSTEM Pte. Ltd.
Phone:+65-6884-5500 Fax:+65-6884-5550
THAILAND
THK LM System Pte. Ltd. Representative Office in Thailand
Phone:+660-2751-3001 Fax:+660-2751-3003
INDIA
THK India Pvt. Ltd.
Phone:+91-80-2340-9934 Fax:+91-80-2340-9937