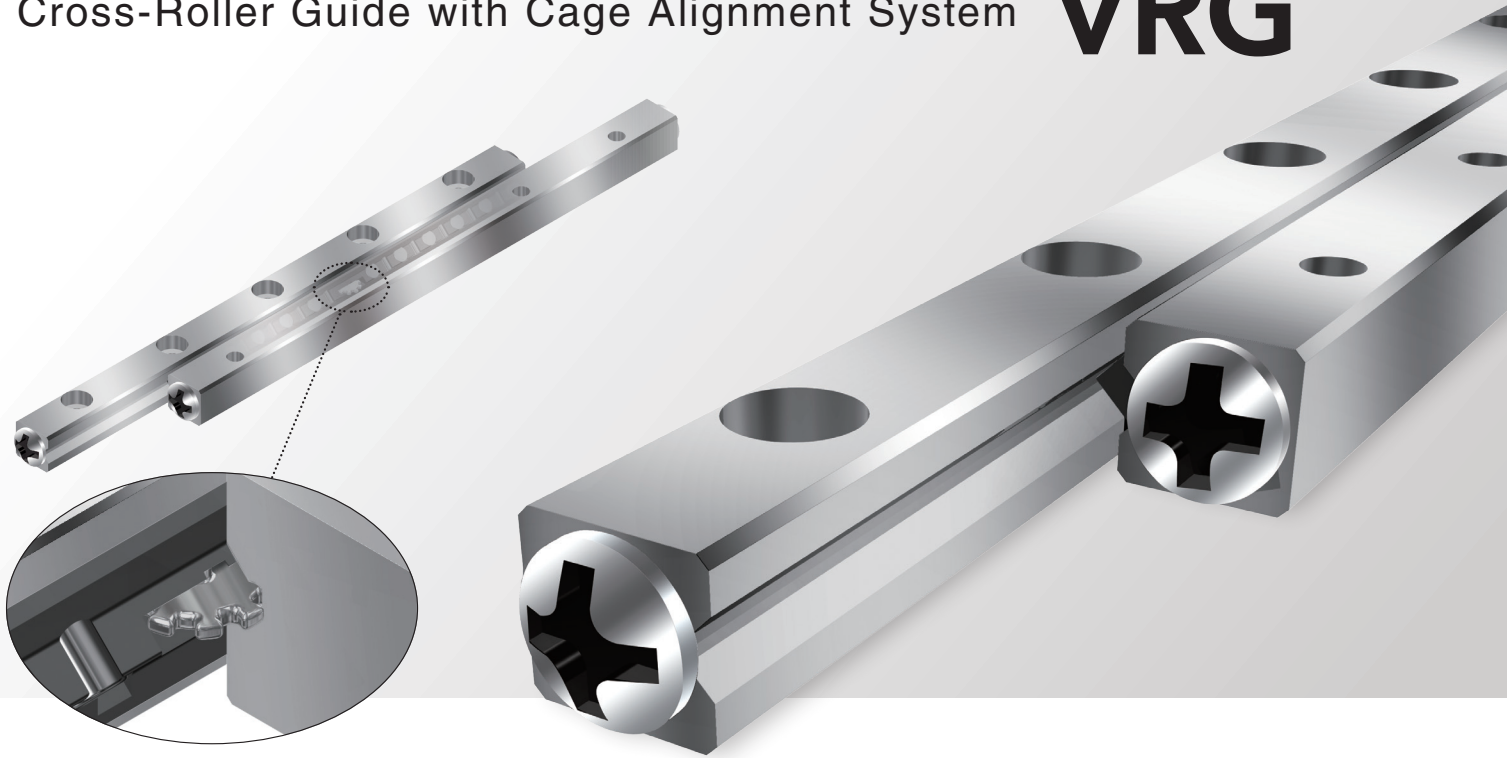


Cross-Roller Guide with Cage Alignment System **VRG**



Adopts a rack and pinion system

Prevents cage misalignment

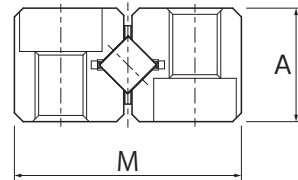
Long life and high rigidity

Interchangeable mounting dimensions

Adopts a proprietary rack and pinion system to prevent ball cage misalignment and achieve stable motion.

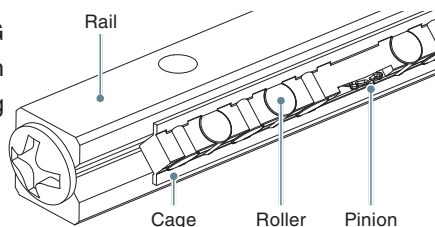
Features more rollers than its predecessor, the Model VR, and achieves a high basic load rating.

Possesses the same mounting dimensions as the Model VR.



Structure

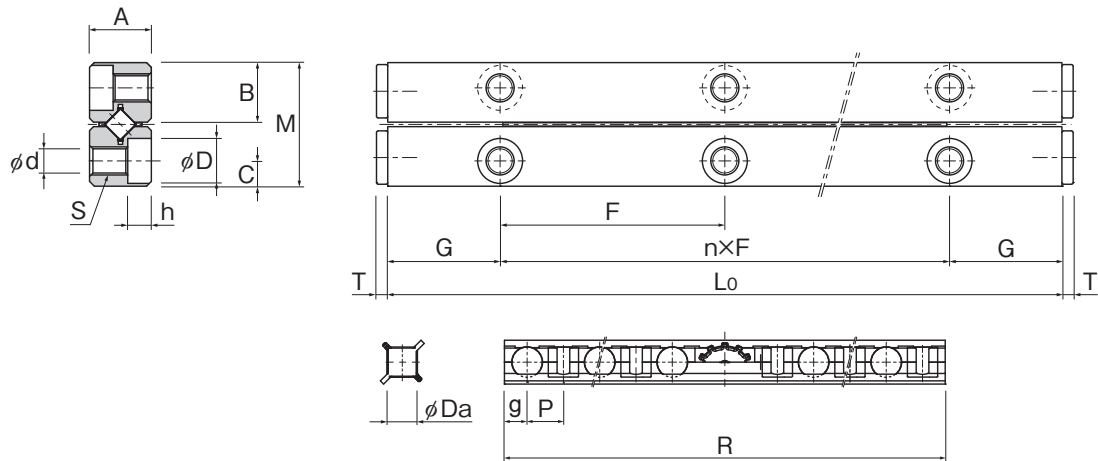
Similar to the VR, the VRG achieves light, smooth motion by not recirculating the rolling elements.



Lineup

Model	Rail length (mm)
VRG2M	30, 45, 60, 75, 90, 105
VRG3M	50, 75, 100, 125, 150
VRG4M	80, 120, 160, 200

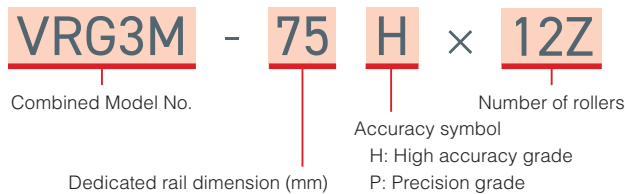
■ Specification Table



Unit: mm

Model	Max. stroke	Main dimensions														Permissible preload δ (μm)	Basic load rating		Weight/ 1 set (kg)				
		Combined dimensions			Mounting dimensions												Rollers Z	C (kN)		C ₀ (kN)			
		M	A	L ₀	n×F	G	B	C	S	d	D	h	T	Da	R						g	P	
VRG2M-30×6Z	13	12	6	30	1×15	7.5	5.6	2.5	M3	2.55	4.4	2	1.5	2	21.1	1.65	2.5	6	-3	1.15	1.63	0.029	
VRG2M-45×12Z	12			45	2×15										36.1					12	1.98	3.26	0.044
VRG2M-60×16Z	22			60	3×15										46.1					16	2.48	4.35	0.058
VRG2M-75×22Z	22			75	4×15										61.1					22	3.18	5.98	0.072
VRG2M-90×24Z	42			90	5×15										66.1					24	3.41	6.52	0.086
VRG2M-105×30Z	42			105	6×15										81.1					30	4.06	8.15	0.100
VRG3M-50×8Z	15	18	8	50	1×25	12.5	8.6	3.5	M4	3.3	6	3.1	2	3	38.7	2.5	3.7	8	-4	4.27	6.61	0.099	
VRG3M-75×12Z	35			75	2×25										53.5					12	5.88	9.92	0.147
VRG3M-100×18Z	41			100	3×25										75.7					18	8.07	14.9	0.196
VRG3M-125×22Z	61			125	4×25										90.5					22	9.44	18.2	0.243
VRG3M-150×28Z	66			150	5×25										112.7					28	11.4	23.1	0.292
VRG4M-80×10Z	34			80	1×40										58.3					10	10.6	17.3	0.269
VRG4M-120×16Z	57	22	11	120	2×40	20	10.6	4.5	M5	4.3	8	4.2	2	4	87.1	3	4.8	16	-5	15.3	27.6	0.401	
VRG4M-160×22Z	78			160	3×40										115.9					22	19.6	38.0	0.533
VRG4M-200×28Z	101			200	4×40										144.7					28	23.6	48.4	0.665

■ Model Number Coding



Note: "1 set" for the above models indicates a single combination of 4 rails and 2 cages.

An "M" in the model number indicates the rail material is stainless steel.

THK CO., LTD.

Global Headquarters 2-12-10 Shibaura, Minato-ku, Tokyo 108-8506 Japan

International Sales Department Phone: +81-3-5730-3860

www.thk.com